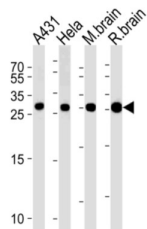
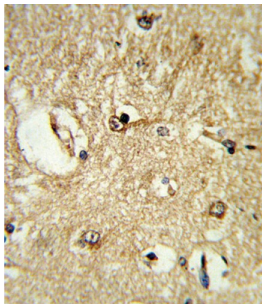
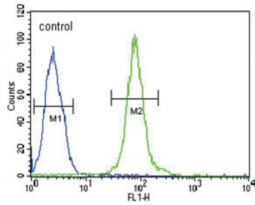


14-3-3 Protein Gamma (YWHAG) Antibody

Catalogue No.: abx031810



This product is currently in development. The lead time for this product may be several months. Please contact us at info@abbexa.com for an updated lead time before purchasing this product.

This product is currently in development. The lead time for this product may be several months. Please contact us at info@abbexa.com for an updated lead time before purchasing this product.

YWHAG belongs to the 14-3-3 family of proteins which mediate signal transduction by binding to phosphoserine-containing proteins. This highly conserved protein family is found in both plants and mammals, and this protein is 100% identical to the rat ortholog. It is induced by growth factors in human vascular smooth muscle cells, and is also highly expressed in skeletal and heart muscles, suggesting an important role for this protein in muscle tissue. It has been shown to interact with RAF1 and protein kinase C, proteins involved in various signal transduction pathways.

Target: 14-3-3 Protein Gamma (YWHAG)

Clonality: Polyclonal

Datasheet

Version: 3.0.0
Revision date: 06 Apr 2025



Reactivity:	Human, Mouse
Tested Applications:	ELISA, WB, IHC, FCM
Host:	Rabbit
Recommended dilutions:	WB: 1/1000, IHC-P: 1/100 - 1/500, FCM: 1/10 - 1/50. Not tested in IHC-F. Optimal dilutions/concentrations should be determined by the end user.
Conjugation:	Unconjugated
Immunogen:	KLH-conjugated synthetic peptide between 63-92 amino acids from the N-terminal region of human YWHAG.
Isotype:	IgG
Form:	Liquid
Purification:	Purified through a protein A column, followed by peptide affinity purification.
Storage:	Aliquot and store at -20°C. Avoid repeated freeze/thaw cycles.
UniProt Primary AC:	P61981 (UniProt , ExPASy)
NCBI Accession:	NP_036611.2
KEGG:	hsa:7532
String:	9606.ENSP00000306330
Molecular Weight:	Calculated MW: 28.3 kDa
Buffer:	PBS containing 0.09% sodium azide.
Specificity:	Predicted to react with Rat, Cow, Chicken, Zebrafish and Xenopus YWHAG.
Note:	THIS PRODUCT IS FOR RESEARCH USE ONLY. NOT FOR USE IN DIAGNOSTIC, THERAPEUTIC OR COSMETIC PROCEDURES. NOT FOR HUMAN OR ANIMAL CONSUMPTION.