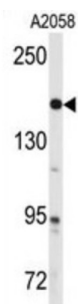


Tyrosine-Protein Kinase ABL2 (ABL) Antibody

Catalogue No.: abx031824



ABL2 is a cytoplasmic tyrosine kinase which is closely related to but distinct from ABL1. The similarity of the proteins includes the tyrosine kinase domains and extends amino-terminal to include the SH2 and SH3 domains. ABL2 is expressed in both normal and tumor cells. The ABL2 gene product is expressed as two variants bearing different amino termini, both approximately 12-kb in length. The peptide used to generate this antibody is 100% conserved between ABL2 and ABL1.

Target: Tyrosine-Protein Kinase ABL2 (ABL)

Clonality: Polyclonal

Reactivity: Human

Tested Applications: ELISA, WB

Host: Rabbit

Recommended dilutions: WB: 1/1000. Optimal dilutions/concentrations should be determined by the end user.

Conjugation: Unconjugated

Immunogen: KLH-conjugated synthetic peptide corresponding to amino acid residues surrounding Y251 of human ABL.

Isotype: IgG

Form: Liquid

Purification: Purified through a protein A column, followed by peptide affinity purification.

Storage: Aliquot and store at -20°C. Avoid repeated freeze/thaw cycles.

UniProt Primary AC: P42684 ([UniProt](#), [ExPASy](#))

Gene Symbol: ABL2

Datasheet

Version: 3.0.0

Revision date: 12 Sep 2025



KEGG: hsa:27

String: [9606.ENSP00000427562](#)

Molecular Weight: Calculated MW: 123 kDa

Buffer: PBS containing 0.09% sodium azide.

Note: THIS PRODUCT IS FOR RESEARCH USE ONLY. NOT FOR USE IN DIAGNOSTIC, THERAPEUTIC OR COSMETIC PROCEDURES. NOT FOR HUMAN OR ANIMAL CONSUMPTION.

For Reference Only