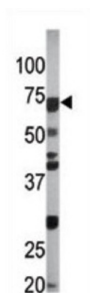
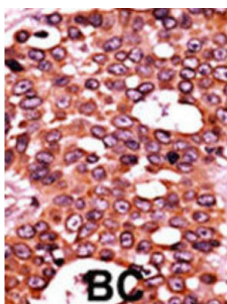


CDC6 (pS54) Antibody

Catalogue No.: abx031847



The protein encoded by this gene is highly similar to *Saccharomyces cerevisiae* Cdc6, a protein essential for the initiation of DNA replication. This protein functions as a regulator at the early steps of DNA replication. It localizes in cell nucleus during cell cycle G1, but translocates to the cytoplasm at the start of S phase. The subcellular translocation of this protein during cell cycle is regulated through its phosphorylation by Cdk. Transcription of this protein was reported to be regulated in response to mitogenic signals through transcriptional control mechanism involving E2F proteins.

Target:	CDC6 (pS54)
Clonality:	Polyclonal
Target Modification:	Ser54
Modification:	Phosphorylation
Reactivity:	Human
Tested Applications:	ELISA, WB, IHC
Host:	Rabbit
Recommended dilutions:	WB: 1/1000, IHC-P: 1/50 - 1/100. Not tested in IHC-F. Optimal dilutions/concentrations should be determined by the end user.
Conjugation:	Unconjugated

Datasheet

Version: 3.0.0
Revision date: 31 May 2025



Immunogen:	KLH-conjugated synthetic phosphopeptide corresponding to amino acid residues surrounding S54 of human CDC6.
Isotype:	IgG
Form:	Liquid
Purification:	Purified by protein G affinity chromatography. Then, the antibody fraction was peptide affinity purified in a 2-step procedure with control and phosphorylated peptides. The phospho-specific antibody was eluted with high and low pH buffers and neutralized immediately, followed by dialysis against PBS.
Storage:	Aliquot and store at -20°C. Avoid repeated freeze/thaw cycles.
UniProt Primary AC:	Q99741 (UniProt , ExPASy)
KEGG:	hsa:990
String:	9606.ENSP00000209728
Molecular Weight:	Calculated MW: 62.7 kDa
Buffer:	PBS containing 0.09% sodium azide.
Note:	THIS PRODUCT IS FOR RESEARCH USE ONLY. NOT FOR USE IN DIAGNOSTIC, THERAPEUTIC OR COSMETIC PROCEDURES. NOT FOR HUMAN OR ANIMAL CONSUMPTION.