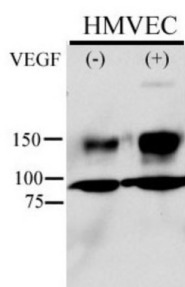
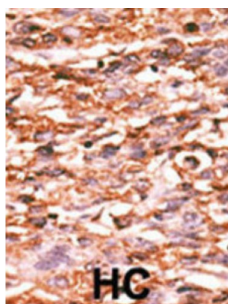


KDR / FLK1 (pY996) Antibody

Catalogue No.: abx031863



KDR (FLK1) is a receptor for VEGF or VEGFC. This protein has a tyrosine-protein kinase activity. The VEGF-kinase ligand/receptor signaling system plays a key role in vascular development and regulation of vascular permeability.

Target: KDR/FLK1 (pY996)

Clonality: Polyclonal

Target Modification: Tyr996

Modification: Phosphorylation

Reactivity: Human

Tested Applications: ELISA, WB, IHC

Host: Rabbit

Recommended dilutions: WB: 1/1000, IHC-P: 1/50 - 1/100. Not tested in IHC-F. Optimal dilutions/concentrations should be determined by the end user.

Conjugation: Unconjugated

Immunogen: KLH-conjugated synthetic phosphopeptide corresponding to amino acid residues surrounding Y996 of human KDR/FLK1.

Datasheet

Version: 5.0.0
Revision date: 06 Mar 2025



Isotype:	IgG
Form:	Liquid
Purification:	Purified by protein G affinity chromatography. Then, the antibody fraction was peptide affinity purified in a 2-step procedure with control and phosphorylated peptides. The phospho-specific antibody was eluted with high and low pH buffers and neutralized immediately, followed by dialysis against PBS.
Storage:	Aliquot and store at -20°C. Avoid repeated freeze/thaw cycles.
UniProt Primary AC:	P35968 (UniProt , ExPASy)
NCBI Accession:	NP_002244.1
KEGG:	hsa:3791
String:	9606.ENSP00000263923
Molecular Weight:	Calculated MW: 152 kDa
Buffer:	PBS containing 0.09% sodium azide.
Note:	THIS PRODUCT IS FOR RESEARCH USE ONLY. NOT FOR USE IN DIAGNOSTIC, THERAPEUTIC OR COSMETIC PROCEDURES. NOT FOR HUMAN OR ANIMAL CONSUMPTION.