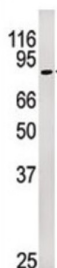
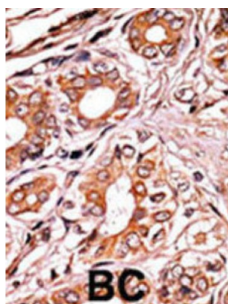


Rb (pS249) Antibody

Catalogue No.: abx031906



RB1 likely acts as a regulator of other genes. It forms a complex with adenovirus E1A and with SV40 large T antigen, acts as a tumor suppressor, and may bind and modulate functionally certain cellular proteins with which T and E1A compete for pocket binding. RB1 is a potent inhibitor of E2F-mediated trans-activation, and also recruits and targets histone methyltransferase SUV39H1 leading to epigenetic transcriptional repression. This protein inhibits the intrinsic kinase activity of TAF1. Defects in RB1 are the cause of childhood cancer retinoblastoma (RB), a congenital malignant tumor that arises from the nuclear layers of the retina. Defects in RB1 are also a cause of bladder cancer and osteogenic sarcoma.

Target:	Rb (pS249)
Clonality:	Polyclonal
Target Modification:	Ser249
Modification:	Phosphorylation
Reactivity:	Human
Tested Applications:	ELISA, WB, IHC
Host:	Rabbit
Recommended dilutions:	WB: 1/1000, IHC-P: 1/50 - 1/100. Not tested in IHC-F. Optimal dilutions/concentrations should be determined by the end user.
Conjugation:	Unconjugated

Datasheet

Version: 3.0.0

Revision date: 29 Aug 2025



Immunogen:	KLH-conjugated synthetic phosphopeptide corresponding to amino acid residues surrounding S249 of human Rb.
Isotype:	IgG
Form:	Liquid
Purification:	Purified by protein G affinity chromatography. Then, the antibody fraction was peptide affinity purified in a 2-step procedure with control and phosphorylated peptides. The phospho-specific antibody was eluted with high and low pH buffers and neutralized immediately, followed by dialysis against PBS.
Storage:	Aliquot and store at -20°C. Avoid repeated freeze/thaw cycles.
UniProt Primary AC:	P06400 (UniProt , ExPASy)
KEGG:	hsa:5925
String:	9606.ENSP00000267163
Molecular Weight:	Calculated MW: 106 kDa
Buffer:	PBS containing 0.09% sodium azide.
Note:	THIS PRODUCT IS FOR RESEARCH USE ONLY. NOT FOR USE IN DIAGNOSTIC, THERAPEUTIC OR COSMETIC PROCEDURES. NOT FOR HUMAN OR ANIMAL CONSUMPTION.