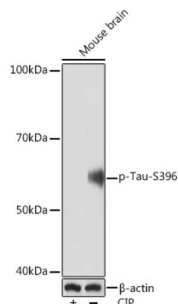
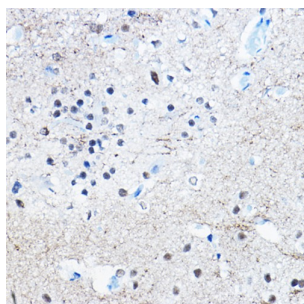


Microtubule-Associated Protein Tau Phospho-Ser396 (MAPT pS396) Antibody

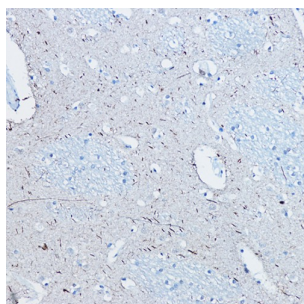
Catalogue No.: abx000215



Western blot analysis of lysates from Mouse brain, using Phospho-Tau-S396 Rabbit antibody at 1/1000 dilution. Mouse brain were treated by CIP (20 μ L/400 μ L) at 37 °C for 1 hour. Secondary antibody: HRP-conjugated Goat anti-Rabbit IgG (H+L) at 1/10000 dilution. Lysates/proteins: 25 μ g per lane. Blocking buffer: 3% BSA. Exposure time: 90s.



Immunohistochemistry analysis of paraffin-embedded Rat brain using Phospho-Tau-S396 Rabbit antibody at dilution of 1/100 (40x lens). High pressure antigen retrieval performed in 0.01 M Citrate buffer (pH 6.0) prior to IHC staining.



Immunohistochemistry analysis of paraffin-embedded Human brain using Phospho-Tau-S396 Rabbit antibody at dilution of 1/100 (40x lens). High pressure antigen retrieval performed in 0.01 M Citrate buffer (pH 6.0) prior to IHC staining.



Immunohistochemistry analysis of paraffin-embedded Mouse brain using Phospho-Tau-S396 Rabbit antibody at dilution of 1/100 (40x lens). High pressure antigen retrieval performed in 0.01 M Citrate buffer (pH 6.0) prior to IHC staining.

MAPT (pS396) Antibody is a Rabbit Monoclonal antibody against MAPT (pS396). This gene encodes the microtubule-associated protein tau (MAPT) whose transcript undergoes complex, regulated alternative splicing, giving rise to several mRNA species. MAPT transcripts are differentially expressed in the nervous system, depending on stage of neuronal maturation and neuron type. MAPT gene mutations have been associated with several neurodegenerative disorders such as Alzheimer's disease, Pick's disease, frontotemporal dementia, cortico-basal degeneration and progressive supranuclear palsy.

Target:

Microtubule-Associated Protein Tau Phospho-Ser396 (MAPT pS396)

Datasheet

Version: 6.0.0
Revision date: 24 Jun 2025



Clonality:	Monoclonal
Target Modification:	Ser396
Modification:	Phosphorylation
Reactivity:	Human, Mouse, Rat
Tested Applications:	ELISA, WB, IHC
Host:	Rabbit
Recommended dilutions:	ELISA: 1 µg/ml, WB: 1/500 - 1/2000, IHC-P: 1/50 - 1/200. Not tested in IHC-F. Optimal dilutions/concentrations should be determined by the end user.
Conjugation:	Unconjugated
Immunogen:	A synthetic phosphorylated peptide around S396 of human Tau.
Isotype:	IgG
Form:	Liquid
Purification:	Purified by affinity chromatography.
Storage:	Aliquot and store at -20°C. Avoid repeated freeze/thaw cycles.
UniProt Primary AC:	P10636 (UniProt , ExPASy)
Gene Symbol:	MAPT
GeneID:	4137
OMIM:	157140
NCBI Accession:	NP_058519.3
HGNC:	6893
KEGG:	hsa:4137
Ensembl:	ENSG00000186868
String:	9606.ENSP00000340820

Datasheet

Version: 6.0.0

Revision date: 24 Jun 2025



Molecular Weight: Calculated MW: 79 kDa
Observed MW: 60 kDa

Buffer: PBS, pH 7.3, containing 0.02% NaN₃, 0.05% BSA, 50% glycerol.

Concentration: 0.2 mg/ml

Note: THIS PRODUCT IS FOR RESEARCH USE ONLY. NOT FOR USE IN DIAGNOSTIC, THERAPEUTIC OR COSMETIC PROCEDURES. NOT FOR HUMAN OR ANIMAL CONSUMPTION.

For Reference Only