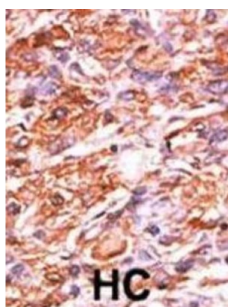
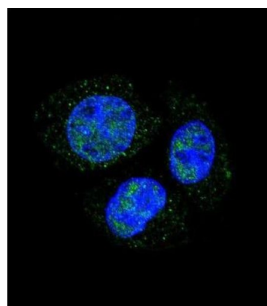
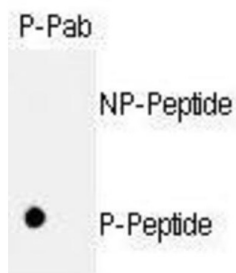


Rb (pS811) Antibody

Catalogue No.: abx031911



Retinoblastoma (RB) is an embryonic malignant neoplasm of retinal origin. It almost always presents in early childhood and is often bilateral. Spontaneous regression occurs in some cases.

Target:	Rb (pS811)
Clonality:	Polyclonal
Target Modification:	Ser811
Modification:	Phosphorylation
Reactivity:	Human
Tested Applications:	ELISA, IHC, IF/ICC, DB

Datasheet

Version: 2.0.0
Revision date: 01 Sep 2025



Host:	Rabbit
Recommended dilutions:	IHC-P: 1/50 - 1/100, IF/ICC: 1/10 - 1/50, DB: 1/500. Not tested in IHC-F. Optimal dilutions/concentrations should be determined by the end user.
Conjugation:	Unconjugated
Immunogen:	KLH-conjugated synthetic phosphopeptide corresponding to amino acid residues surrounding S811 of human Rb.
Isotype:	IgG
Form:	Liquid
Purification:	Purified by protein G affinity chromatography. Then, the antibody fraction was peptide affinity purified in a 2-step procedure with control and phosphorylated peptides. The phospho-specific antibody was eluted with high and low pH buffers and neutralized immediately, followed by dialysis against PBS.
Storage:	Aliquot and store at -20°C. Avoid repeated freeze/thaw cycles.
UniProt Primary AC:	P06400 (UniProt , ExPASy)
KEGG:	hsa:5925
String:	9606.ENSP00000267163
Molecular Weight:	Calculated MW: 106 kDa
Buffer:	PBS containing 0.09% sodium azide.
Specificity:	Predicted to react with Mouse and Rat RB1.
Note:	THIS PRODUCT IS FOR RESEARCH USE ONLY. NOT FOR USE IN DIAGNOSTIC, THERAPEUTIC OR COSMETIC PROCEDURES. NOT FOR HUMAN OR ANIMAL CONSUMPTION.