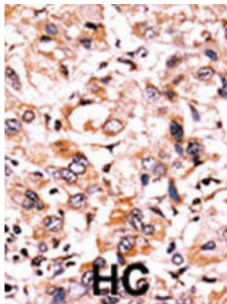
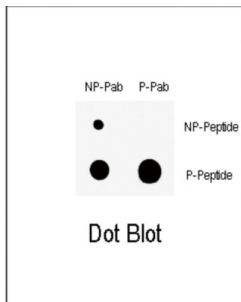


Wee1 (pS123) Antibody

Catalogue No.: abx031927



This gene encodes a nuclear protein, which is a tyrosine kinase belonging to the Ser/Thr family of protein kinases. This protein catalyzes the inhibitory tyrosine phosphorylation of CDC2/cyclin B kinase, and appears to coordinate the transition between DNA replication and mitosis by protecting the nucleus from cytoplasmically activated CDC2 kinase.

Target: Wee1 (pS123)

Clonality: Polyclonal

Target Modification: Ser123

Modification: Phosphorylation

Reactivity: Human

Tested Applications: ELISA, IHC, DB

Host: Rabbit

Recommended dilutions: IHC-P: 1/50 - 1/100, DB: 1/500. Not tested in IHC-F. Optimal dilutions/concentrations should be determined by the end user.

Conjugation: Unconjugated

Immunogen: KLH-conjugated synthetic phosphopeptide corresponding to amino acid residues surrounding S123 of human Wee1.

Datasheet

Version: 2.0.0
Revision date: 28 Aug 2025



Isotype:	IgG
Form:	Liquid
Purification:	Purified by protein G affinity chromatography. Then, the antibody fraction was peptide affinity purified in a 2-step procedure with control and phosphorylated peptides. The phospho-specific antibody was eluted with high and low pH buffers and neutralized immediately, followed by dialysis against PBS.
Storage:	Aliquot and store at -20°C. Avoid repeated freeze/thaw cycles.
UniProt Primary AC:	P30291 (UniProt , ExPASy)
NCBI Accession:	NP_001137448.1, NP_003381.1
KEGG:	hsa:7465
String:	9606.ENSP00000402084
Molecular Weight:	Calculated MW: 71.6 kDa
Buffer:	PBS containing 0.09% sodium azide.
Note:	THIS PRODUCT IS FOR RESEARCH USE ONLY. NOT FOR USE IN DIAGNOSTIC, THERAPEUTIC OR COSMETIC PROCEDURES. NOT FOR HUMAN OR ANIMAL CONSUMPTION.