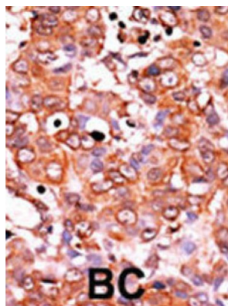
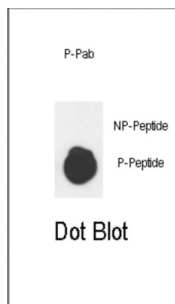


Wee1 (pS53) Antibody

Catalogue No.: abx031928



This product is currently in development. The lead time for this product may be several months. Please contact us at info@abbexa.com for an updated lead time before purchasing this product.

This product is currently in development. The lead time for this product may be several months. Please contact us at info@abbexa.com for an updated lead time before purchasing this product.

This gene encodes a nuclear protein, which is a tyrosine kinase belonging to the Ser/Thr family of protein kinases. This protein catalyzes the inhibitory tyrosine phosphorylation of CDC2/cyclin B kinase, and appears to coordinate the transition between DNA replication and mitosis by protecting the nucleus from cytoplasmically activated CDC2 kinase.

Target: Wee1 (pS53)

Clonality: Polyclonal

Target Modification: Ser53

Modification: Phosphorylation

Reactivity: Human

Tested Applications: ELISA, IHC, DB

Host: Rabbit

Datasheet

Version: 3.0.0
Revision date: 28 Aug 2025



Recommended dilutions: IHC-P: 1/100 - 1/500, DB: 1/500. Not tested in IHC-F. Optimal dilutions/concentrations should be determined by the end user.

Conjugation: Unconjugated

Immunogen: KLH-conjugated synthetic phosphopeptide corresponding to amino acid residues surrounding S53 of human Wee1.

Isotype: IgG

Form: Liquid

Purification: Purified by protein G affinity chromatography. Then, the antibody fraction was peptide affinity purified in a 2-step procedure with control and phosphorylated peptides. The phospho-specific antibody was eluted with high and low pH buffers and neutralized immediately, followed by dialysis against PBS.

Storage: Aliquot and store at -20°C. Avoid repeated freeze/thaw cycles.

UniProt Primary AC: P30291 ([UniProt](#), [ExPASy](#))

NCBI Accession: NP_001137448.1, NP_003381.1

KEGG: hsa:7465

String: [9606.ENSP00000402084](#)

Molecular Weight: Calculated MW: 71.6 kDa

Buffer: PBS containing 0.09% sodium azide.

Specificity: Predicted to react with Mouse and Rat WEE1.

Note: THIS PRODUCT IS FOR RESEARCH USE ONLY. NOT FOR USE IN DIAGNOSTIC, THERAPEUTIC OR COSMETIC PROCEDURES. NOT FOR HUMAN OR ANIMAL CONSUMPTION.