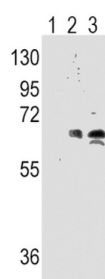
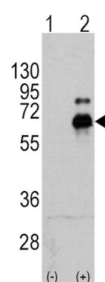
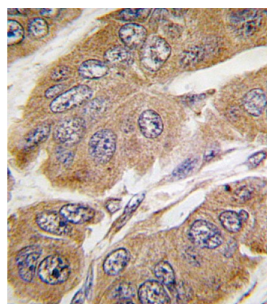


Ribosomal Protein S6 Kinase Beta-1 (S6K) Antibody

Catalogue No.: abx031932



RPS6KB1 is a member of the RSK (ribosomal S6 kinase) family of serine/threonine kinases. This kinase contains 2 non-identical kinase catalytic domains and phosphorylates several residues of the S6 ribosomal protein. The kinase activity of this protein leads to an increase in protein synthesis and cell proliferation. Amplification of the region of DNA encoding the gene for RPS6KB1 and overexpression of this kinase are seen in some breast cancer cell lines.

Target: Ribosomal Protein S6 Kinase Beta-1 (S6K)

Clonality: Polyclonal

Reactivity: Human

Tested Applications: ELISA, WB, IHC

Host: Rabbit

Recommended dilutions: WB: 1/1000, IHC-P: 1/10 - 1/50. Not tested in IHC-F. Optimal dilutions/concentrations should be determined by the end user.

Datasheet

Version: 2.0.0
Revision date: 08 Aug 2025



Conjugation:	Unconjugated
Immunogen:	KLH-conjugated synthetic peptide between 425-454 amino acids from human S6K (RPS6KB1).
Isotype:	IgG
Form:	Liquid
Purification:	Purified through a protein A column, followed by peptide affinity purification.
Storage:	Aliquot and store at -20°C. Avoid repeated freeze/thaw cycles.
UniProt Primary AC:	P23443 (UniProt , ExPASy)
Gene Symbol:	RPS6KB1
KEGG:	hsa:6198
String:	9606.ENSP00000225577
Molecular Weight:	Calculated MW: 59.1 kDa
Buffer:	PBS containing 0.09% sodium azide.
Specificity:	Predicted to react with Mouse, Rat, Cow and Rabbit RPS6KB1.
Note:	THIS PRODUCT IS FOR RESEARCH USE ONLY. NOT FOR USE IN DIAGNOSTIC, THERAPEUTIC OR COSMETIC PROCEDURES. NOT FOR HUMAN OR ANIMAL CONSUMPTION.