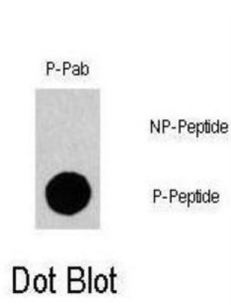


Gab1 (pY659) Antibody

Catalogue No.: abx031937



Gab1 is a member of the IRS1-like multisubstrate docking protein family. This protein is an important mediator of branching tubulogenesis and plays a central role in cellular growth response, transformation and apoptosis.

Target:	Gab1 (pY659)
Clonality:	Polyclonal
Target Modification:	Tyr659
Modification:	Phosphorylation
Reactivity:	Human
Tested Applications:	ELISA, DB
Host:	Rabbit
Recommended dilutions:	DB: 1/500. Optimal dilutions/concentrations should be determined by the end user.
Conjugation:	Unconjugated
Immunogen:	KLH-conjugated synthetic phosphopeptide corresponding to amino acid residues surrounding Y659 of human Gab1.
Isotype:	IgG
Form:	Liquid
Purification:	Purified by protein A affinity chromatography. Then, the antibody fraction was peptide affinity purified in a 2-step procedure with peptides. The antibody was eluted with high and low pH buffers and neutralized immediately, followed by dialysis against PBS.
Storage:	Aliquot and store at -20°C. Avoid repeated freeze/thaw cycles.

Datasheet

Version: 2.0.0

Revision date: 06 Sep 2025



UniProt Primary AC: Q13480 ([UniProt](#), [ExPASy](#))

KEGG: hsa:2549

String: [9606.ENSP00000262995](#)

Molecular Weight: Calculated MW: 76.6 kDa

Buffer: PBS containing 0.09% sodium azide.

Specificity: Predicted to react with Mouse and Cow GAB1.

Note: THIS PRODUCT IS FOR RESEARCH USE ONLY. NOT FOR USE IN DIAGNOSTIC, THERAPEUTIC OR COSMETIC PROCEDURES. NOT FOR HUMAN OR ANIMAL CONSUMPTION.

For Reference Only