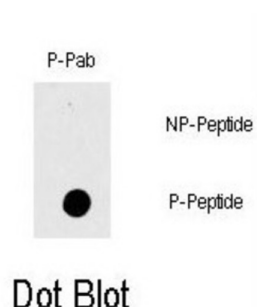


## RAF1 (pT269) Antibody

Catalogue No.: abx031953



Raf-1 is a MAP kinase kinase kinase (MAP3K) which functions downstream of the Ras family of membrane associated GTPases to which it binds directly. Once activated Raf-1 can phosphorylate to activate the dual specificity protein kinases MEK1 and MEK2 which in turn phosphorylate to activate the serine/threonine specific protein kinases ERK1 and ERK2. Activated ERKs are pleiotropic effectors of cell physiology and play an important role in the control of gene expression involved in the cell division cycle, apoptosis, cell differentiation and cell migration.

<b>Target:</b>	RAF1 (pT269)
<b>Clonality:</b>	Polyclonal
<b>Target Modification:</b>	Thr269
<b>Modification:</b>	Phosphorylation
<b>Reactivity:</b>	Human
<b>Tested Applications:</b>	ELISA, DB
<b>Host:</b>	Rabbit
<b>Recommended dilutions:</b>	DB: 1/500. Optimal dilutions/concentrations should be determined by the end user.
<b>Conjugation:</b>	Unconjugated
<b>Immunogen:</b>	KLH-conjugated synthetic phosphopeptide corresponding to amino acid residues surrounding T269 of human RAF1.
<b>Isotype:</b>	IgG
<b>Form:</b>	Liquid
<b>Purification:</b>	Purified through a protein A column, followed by two-step phosphospecific peptide affinity purification.

# Datasheet

Version: 2.0.0  
Revision date: 16 Mar 2025



**Storage:** Aliquot and store at -20°C. Avoid repeated freeze/thaw cycles.

**UniProt Primary AC:** P04049 ([UniProt](#), [ExPASy](#))

**KEGG:** hsa:5894

**String:** [9606.ENSP00000251849](#)

**Molecular Weight:** Calculated MW: 73.1 kDa

**Buffer:** PBS containing 0.09% sodium azide.

**Specificity:** Predicted to react with Rat RAF1.

**Note:** THIS PRODUCT IS FOR RESEARCH USE ONLY. NOT FOR USE IN DIAGNOSTIC, THERAPEUTIC OR COSMETIC PROCEDURES. NOT FOR HUMAN OR ANIMAL CONSUMPTION.

For Reference Only