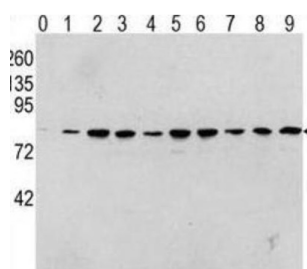
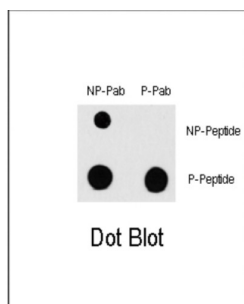


RAF1 (pS338) Antibody

Catalogue No.: abx031955



Raf-1 is a MAP kinase kinase kinase (MAP3K) which functions downstream of the Ras family of membrane associated GTPases to which it binds directly. Once activated Raf-1 can phosphorylate to activate the dual specificity protein kinases MEK1 and MEK2 which in turn phosphorylate to activate the serine/threonine specific protein kinases ERK1 and ERK2. Activated ERKs are pleiotropic effectors of cell physiology and play an important role in the control of gene expression involved in the cell division cycle, apoptosis, cell differentiation and cell migration.

Target:	RAF1 (pS338)
Clonality:	Polyclonal
Target Modification:	Ser338
Modification:	Phosphorylation
Reactivity:	Human
Tested Applications:	ELISA, WB, DB
Host:	Rabbit
Recommended dilutions:	WB: 1/1000, DB: 1/500. Optimal dilutions/concentrations should be determined by the end user.
Conjugation:	Unconjugated

Datasheet

Version: 2.0.0
Revision date: 26 Aug 2025



Immunogen:	KLH-conjugated synthetic phosphopeptide corresponding to amino acid residues surrounding S338 of human RAF1.
Isotype:	IgG
Form:	Liquid
Purification:	Purified by protein A affinity chromatography. Then, the antibody fraction was peptide affinity purified in a 2-step procedure with peptides. The antibody was eluted with high and low pH buffers and neutralized immediately, followed by dialysis against PBS.
Storage:	Aliquot and store at -20°C. Avoid repeated freeze/thaw cycles.
UniProt Primary AC:	P04049 (UniProt , ExPASy)
NCBI Accession:	NP_002871.1
KEGG:	hsa:5894
String:	9606.ENSP00000251849
Molecular Weight:	Calculated MW: 73.1 kDa
Buffer:	PBS containing 0.09% sodium azide.
Specificity:	Predicted to react with Mouse, Rat, Cow and Chicken RAF1.
Note:	THIS PRODUCT IS FOR RESEARCH USE ONLY. NOT FOR USE IN DIAGNOSTIC, THERAPEUTIC OR COSMETIC PROCEDURES. NOT FOR HUMAN OR ANIMAL CONSUMPTION.