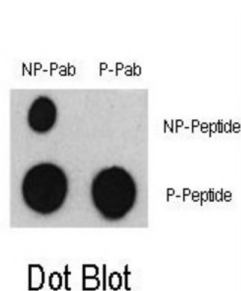


ATF2 (pS322) Antibody

Catalogue No.: abx031961



ATF2 is a transcription factor that is a member of the leucine zipper family of DNA binding proteins. This protein binds to the cAMP-responsive element (CRE), an octameric palindrome. The protein forms a homodimer or heterodimer with c-Jun and stimulates CRE-dependent transcription. The protein is also a histone acetyltransferase (HAT) that specifically acetylates histones H2B and H4 in vitro; thus it may represent a class of sequence-specific factors that activate transcription by direct effects on chromatin components.

Target: ATF2 (pS322)

Clonality: Polyclonal

Target Modification: Ser322

Modification: Phosphorylation

Reactivity: Human

Tested Applications: ELISA, DB

Host: Rabbit

Recommended dilutions: DB: 1/500. Optimal dilutions/concentrations should be determined by the end user.

Conjugation: Unconjugated

Immunogen: KLH-conjugated synthetic phosphopeptide corresponding to amino acid residues surrounding S322 of human ATF2.

Isotype: IgG

Form: Liquid

Purification: Purified by protein A affinity chromatography. Then, the antibody fraction was peptide affinity purified in a 2-step procedure with peptides. The antibody was eluted with high and low pH buffers and neutralized immediately, followed by dialysis against PBS.

Datasheet

Version: 2.0.0

Revision date: 06 Oct 2025



Storage: Aliquot and store at -20°C. Avoid repeated freeze/thaw cycles.

UniProt Primary AC: P15336 ([UniProt](#), [ExPASy](#))

Molecular Weight: Calculated MW: 54.5 kDa

Buffer: PBS containing 0.09% sodium azide.

Note: THIS PRODUCT IS FOR RESEARCH USE ONLY. NOT FOR USE IN DIAGNOSTIC, THERAPEUTIC OR COSMETIC PROCEDURES. NOT FOR HUMAN OR ANIMAL CONSUMPTION.

For Reference Only