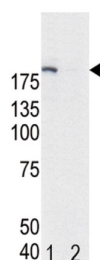
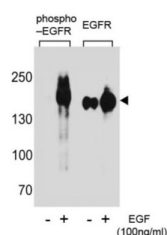
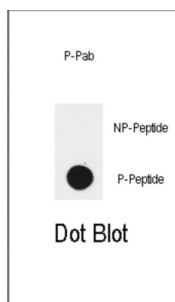


EGFR (pY1172) Antibody

Catalogue No.: abx031971



Epidermal Growth factor receptor (EGFR) is the prototype member of the type 1 receptor tyrosine kinases. EGFR overexpression in tumors indicates poor prognosis and is observed in tumors of the head and neck, brain, bladder, stomach, breast, lung, endometrium, cervix, vulva, ovary, esophagus, stomach and in squamous cell carcinoma. EGFR is a receptor for EGF, but also for other members of the EGF family, including TGF- α , amphiregulin, betacellulin, heparin-binding EGF-like growth factor, GP30 and vaccinia virus growth factor. Is involved in the control of cell growth and differentiation.

Target: EGFR (pY1172)

Clonality: Polyclonal

Target Modification: Tyr1172

Modification: Phosphorylation

Reactivity: Human

Datasheet

Version: 2.0.0
Revision date: 03 Oct 2025



Tested Applications: ELISA, WB, DB

Host: Rabbit

Recommended dilutions: WB: 1/1000, DB: 1/500. Optimal dilutions/concentrations should be determined by the end user.

Conjugation: Unconjugated

Immunogen: KLH-conjugated synthetic phosphopeptide corresponding to amino acid residues surrounding Y1172 of human EGFR.

Isotype: IgG

Form: Liquid

Purification: Purified by protein A affinity chromatography. Then, the antibody fraction was peptide affinity purified in a 2-step procedure with peptides. The antibody was eluted with high and low pH buffers and neutralized immediately, followed by dialysis against PBS.

Storage: Aliquot and store at -20°C. Avoid repeated freeze/thaw cycles.

UniProt Primary AC: P00533 ([UniProt](#), [ExPASy](#))

NCBI Accession: NP_005219.2, NP_958439.1, NP_958440.1, NP_958441.1

KEGG: hsa:1956

String: [9606.ENSP00000275493](#)

Molecular Weight: Calculated MW: 134 kDa

Buffer: PBS containing 0.09% sodium azide.

Note: THIS PRODUCT IS FOR RESEARCH USE ONLY. NOT FOR USE IN DIAGNOSTIC, THERAPEUTIC OR COSMETIC PROCEDURES. NOT FOR HUMAN OR ANIMAL CONSUMPTION.