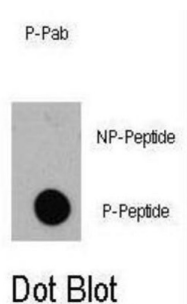


## EIF4EBP1 (pT36) Antibody

Catalogue No.: abx031976



EIF4EBP1 is a member of a family of translation repressor proteins. This protein directly interacts with eukaryotic translation initiation factor 4E (eIF4E), which is a limiting component of the multisubunit complex that recruits 40S ribosomal subunits to the 5' end of mRNAs. Interaction of this protein with eIF4E inhibits complex assembly and represses translation. It is phosphorylated in response to various signals including UV irradiation and insulin signaling, resulting in its dissociation from eIF4E and activation of mRNA translation.

<b>Target:</b>	EIF4EBP1 (pT36)
<b>Clonality:</b>	Polyclonal
<b>Target Modification:</b>	Thr36
<b>Modification:</b>	Phosphorylation
<b>Reactivity:</b>	Human
<b>Tested Applications:</b>	ELISA, DB
<b>Host:</b>	Rabbit
<b>Recommended dilutions:</b>	DB: 1/500. Optimal dilutions/concentrations should be determined by the end user.
<b>Conjugation:</b>	Unconjugated
<b>Immunogen:</b>	KLH-conjugated synthetic phosphopeptide corresponding to amino acid residues surrounding T36 of human EIF4EBP1.
<b>Isotype:</b>	IgG
<b>Form:</b>	Liquid
<b>Purification:</b>	Purified by protein A affinity chromatography. Then, the antibody fraction was peptide affinity purified in a 2-step procedure with peptides. The antibody was eluted with high and low pH buffers and neutralized immediately, followed by dialysis against PBS.

# Datasheet

Version: 2.0.0  
Revision date: 02 Jun 2025



**Storage:** Aliquot and store at -20°C. Avoid repeated freeze/thaw cycles.

**UniProt Primary AC:** Q13541 ([UniProt](#), [ExPASy](#))

**KEGG:** hsa:1978

**String:** [9606.ENSP00000340691](#)

**Molecular Weight:** Calculated MW: 12.6 kDa

**Buffer:** PBS containing 0.09% sodium azide.

**Specificity:** Predicted to react with Mouse, Rat and Cow EIF4EBP1.

**Note:** THIS PRODUCT IS FOR RESEARCH USE ONLY. NOT FOR USE IN DIAGNOSTIC, THERAPEUTIC OR COSMETIC PROCEDURES. NOT FOR HUMAN OR ANIMAL CONSUMPTION.

For Reference Only