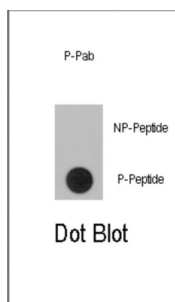


RPS6KA1 (pS363) Antibody

Catalogue No.: abx031993



RSK1 is a member of the RSK (ribosomal S6 kinase) family of serine/threonine kinases. This kinase contains 2 nonidentical kinase catalytic domains and phosphorylates various substrates, including members of the mitogen-activated kinase (MAPK) signalling pathway. The activity of this protein has been implicated in controlling cell growth and differentiation.

Target:	RPS6KA1 (pS363)
Clonality:	Polyclonal
Target Modification:	Ser363
Modification:	Phosphorylation
Reactivity:	Human
Tested Applications:	ELISA, DB
Host:	Rabbit
Recommended dilutions:	DB: 1/500. Optimal dilutions/concentrations should be determined by the end user.
Conjugation:	Unconjugated
Immunogen:	KLH-conjugated synthetic phosphopeptide corresponding to amino acid residues surrounding S363 of human RPS6KA1.
Isotype:	IgG
Form:	Liquid
Purification:	Purified in a 2-step procedure with the control and phosphorylated peptides. The phospho-specific antibody was eluted with high and low pH buffers and neutralized immediately, followed by dialysis against PBS.

Datasheet

Version: 3.0.0
Revision date: 23 Jul 2025



Storage: Aliquot and store at -20°C. Avoid repeated freeze/thaw cycles.

UniProt Primary AC: Q15418 ([UniProt](#), [ExPASy](#))

KEGG: hsa:6195

String: [9606.ENSP00000435412](#)

Molecular Weight: Calculated MW: 82.7 kDa

Buffer: PBS containing 0.09% sodium azide.

Specificity: Predicted to react with Chicken and Xenopus RPS6KA1.

Note: THIS PRODUCT IS FOR RESEARCH USE ONLY. NOT FOR USE IN DIAGNOSTIC, THERAPEUTIC OR COSMETIC PROCEDURES. NOT FOR HUMAN OR ANIMAL CONSUMPTION.

For Reference Only