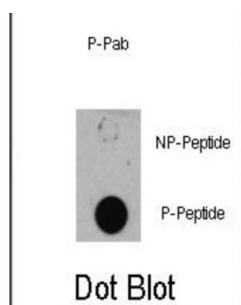


TSC1 (pS505) Antibody

Catalogue No.: abx031998



TSC1 is implicated as a tumor suppressor, and may have a function in vesicular transport. Interaction between TSC1 and TSC2 may facilitate vesicular docking. Defects in TSC1 are the cause of tuberous sclerosis complex (TSC). The molecular basis of TSC is a functional impairment of the hamartin-tuberin complex. TSC is an autosomal dominant multi-system disorder that affects especially the brain, kidneys, heart, and skin. Defects in TSC1 may be a cause of focal cortical dysplasia of Taylor balloon cell type (FCDBC). FCDBC is a subtype of cortical dysplasias linked to chronic intractable epilepsy. Cortical dysplasias display a broad spectrum of structural changes, which appear to result from changes in proliferation, migration, differentiation, and apoptosis of neuronal precursors and neurons during cortical development.

Target: TSC1 (pS505)

Clonality: Polyclonal

Target Modification: Ser505

Modification: Phosphorylation

Reactivity: Human

Tested Applications: ELISA, DB

Host: Rabbit

Recommended dilutions: DB: 1/500. Optimal dilutions/concentrations should be determined by the end user.

Conjugation: Unconjugated

Immunogen: KLH-conjugated synthetic phosphopeptide corresponding to amino acid residues surrounding S505 of human TSC1.

Isotype: IgG

Form: Liquid

Datasheet

Version: 2.0.0
Revision date: 05 Sep 2025



Purification:	Purified in a 2-step procedure with the control and phosphorylated peptides. The phospho-specific antibody was eluted with high and low pH buffers and neutralized immediately, followed by dialysis against PBS.
Storage:	Aliquot and store at -20°C. Avoid repeated freeze/thaw cycles.
UniProt Primary AC:	Q92574 (UniProt , ExPASy)
KEGG:	hsa:7248
String:	9606.ENSP00000298552
Molecular Weight:	Calculated MW: 130 kDa
Buffer:	PBS containing 0.09% sodium azide.
Specificity:	Predicted to react with Mouse TSC1.
Note:	THIS PRODUCT IS FOR RESEARCH USE ONLY. NOT FOR USE IN DIAGNOSTIC, THERAPEUTIC OR COSMETIC PROCEDURES. NOT FOR HUMAN OR ANIMAL CONSUMPTION.

For Reference Only