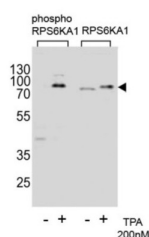
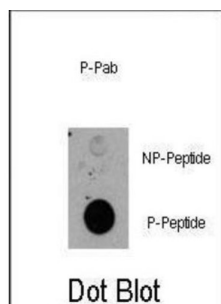


RPS6KA1 (pT359) Antibody

Catalogue No.: abx032011



RPS6KA1 is a member of the RSK (ribosomal S6 kinase) family of serine/threonine kinases. This kinase contains 2 nonidentical kinase catalytic domains and phosphorylates various substrates, including members of the mitogen-activated kinase (MAPK) signalling pathway. The activity of this protein has been implicated in controlling cell growth and differentiation.

Target: RPS6KA1 (pT359)

Clonality: Polyclonal

Target Modification: Thr359

Modification: Phosphorylation

Reactivity: Human

Tested Applications: ELISA, WB, DB

Host: Rabbit

Recommended dilutions: WB: 1/2000, DB: 1/500. Optimal dilutions/concentrations should be determined by the end user.

Conjugation: Unconjugated

Immunogen: KLH-conjugated synthetic phosphopeptide corresponding to amino acid residues surrounding T359 of human RPS6KA1.

Datasheet

Version: 3.0.0
Revision date: 04 Oct 2025



Isotype:	IgG
Form:	Liquid
Purification:	Purified through a protein A column, followed by two-step phosphospecific peptide affinity purification.
Storage:	Aliquot and store at -20°C. Avoid repeated freeze/thaw cycles.
UniProt Primary AC:	Q15418 (UniProt , ExPASy)
NCBI Accession:	NP_001006666.1, NP_002944.2
KEGG:	hsa:6195
String:	9606.ENSP00000435412
Molecular Weight:	Calculated MW: 82.7 kDa
Buffer:	PBS containing 0.09% sodium azide.
Specificity:	Predicted to react with Chicken and Xenopus RPS6KA1.
Note:	THIS PRODUCT IS FOR RESEARCH USE ONLY. NOT FOR USE IN DIAGNOSTIC, THERAPEUTIC OR COSMETIC PROCEDURES. NOT FOR HUMAN OR ANIMAL CONSUMPTION.