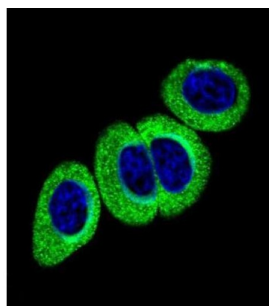
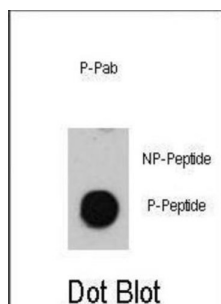


ATM (pS1981) Antibody

Catalogue No.: abx032012



ATM belongs to the PI3/PI4-kinase family. This protein is an important cell cycle checkpoint kinase that phosphorylates; thus, it functions as a regulator of a wide variety of downstream proteins, including tumor suppressor proteins p53 and BRCA1, checkpoint kinase CHK2, checkpoint proteins RAD17 and RAD9, and DNA repair protein NBS1. ATM and the closely related kinase ATR are thought to be master controllers of cell cycle checkpoint signaling pathways that are required for cell response to DNA damage and for genome stability. Mutations in the gene encoding ATM are associated with ataxia telangiectasia, an autosomal recessive disorder.

Target: ATM (pS1981)

Clonality: Polyclonal

Target Modification: Ser1981

Modification: Phosphorylation

Reactivity: Human

Tested Applications: ELISA, IF/ICC, DB

Host: Rabbit

Recommended dilutions: IF/ICC: 1/10 - 1/50, DB: 1/500. Optimal dilutions/concentrations should be determined by the end user.

Conjugation: Unconjugated

Datasheet

Version: 2.0.0
Revision date: 13 Aug 2025



Immunogen:	KLH-conjugated synthetic phosphopeptide corresponding to amino acid residues surrounding S1981 of human ATM.
Isotype:	IgG
Form:	Liquid
Purification:	Purified through a protein A column, followed by two-step phosphospecific peptide affinity purification.
Storage:	Aliquot and store at -20°C. Avoid repeated freeze/thaw cycles.
UniProt Primary AC:	Q13315 (UniProt , ExPASy)
KEGG:	hsa:472
String:	9606.ENSP00000278616
Molecular Weight:	Calculated MW: 351 kDa
Buffer:	PBS containing 0.09% sodium azide.
Note:	THIS PRODUCT IS FOR RESEARCH USE ONLY. NOT FOR USE IN DIAGNOSTIC, THERAPEUTIC OR COSMETIC PROCEDURES. NOT FOR HUMAN OR ANIMAL CONSUMPTION.