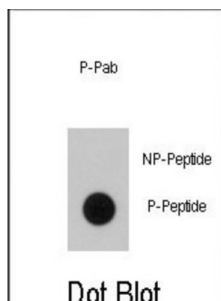


## B-Raf Proto Oncogene Serine/Threonine Protein Kinase Phospho-Thr400 (BRAF pT400) Antibody

Catalogue No.: abx032015



BRAF is involved in the transduction of mitogenic signals from the cell membrane to the nucleus. It may play a role in the postsynaptic responses of hippocampal neurons. Defects in BRAF are a cause of cardiofaciocutaneous syndrome (CFC syndrome), and a wide range of cancers such as lung cancer, non-Hodgkins lymphoma, and colorectal cancer.

<b>Target:</b>	B-Raf Proto Oncogene Serine/Threonine Protein Kinase Phospho-Thr400 (BRAF pT400)
<b>Clonality:</b>	Polyclonal
<b>Target Modification:</b>	Thr400
<b>Modification:</b>	Phosphorylation
<b>Reactivity:</b>	Human
<b>Tested Applications:</b>	ELISA, DB
<b>Host:</b>	Rabbit
<b>Recommended dilutions:</b>	DB: 1/500. Optimal dilutions/concentrations should be determined by the end user.
<b>Conjugation:</b>	Unconjugated
<b>Immunogen:</b>	KLH-conjugated synthetic phosphopeptide corresponding to amino acid residues surrounding T400 of human BRAF.
<b>Isotype:</b>	IgG
<b>Form:</b>	Liquid
<b>Purification:</b>	Purified through a protein A column, followed by two-step phosphospecific peptide affinity purification.

# Datasheet

Version: 2.0.0  
Revision date: 22 Jun 2025



**Storage:** Aliquot and store at -20°C. Avoid repeated freeze/thaw cycles.

**UniProt Primary AC:** P15056 ([UniProt](#), [ExPASy](#))

**NCBI Accession:** NP\_004324.2

**KEGG:** hsa:673

**String:** [9606.ENSP00000288602](#)

**Molecular Weight:** Calculated MW: 84.4 kDa

**Buffer:** PBS containing 0.09% sodium azide.

**Specificity:** Predicted to react with Mouse BRAF.

**Note:** THIS PRODUCT IS FOR RESEARCH USE ONLY. NOT FOR USE IN DIAGNOSTIC, THERAPEUTIC OR COSMETIC PROCEDURES. NOT FOR HUMAN OR ANIMAL CONSUMPTION.

For Reference Only