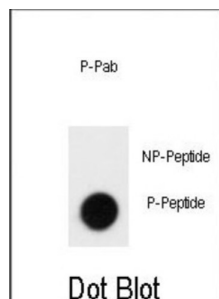


Signaling Lymphocytic Activation Molecule Family Member 1 Phospho-Tyr281 (SLAMF1 pY281) Antibody

Catalogue No.: abx032024



SLAMF1 is a high-affinity self-ligand important in bidirectional T-cell to B-cell stimulation. SLAM-induced signal-transduction events in T-lymphocytes are different from those in B-cells. Two modes of SLAM signaling are likely to exist: one in which the inhibitor SH2D1A acts as a negative regulator and another in which protein-tyrosine phosphatase 2C (pYPN11) dependent signal transduction operates.

| | |
|-------------------------------|--|
| Target: | Signaling Lymphocytic Activation Molecule Family Member 1 Phospho-Tyr281 (SLAMF1 pY281) |
| Clonality: | Polyclonal |
| Target Modification: | Tyr281 |
| Modification: | Phosphorylation |
| Reactivity: | Human |
| Tested Applications: | ELISA, DB |
| Host: | Rabbit |
| Recommended dilutions: | DB: 1/500. Optimal dilutions/concentrations should be determined by the end user. |
| Conjugation: | Unconjugated |
| Immunogen: | KLH-conjugated synthetic phosphopeptide corresponding to amino acid residues surrounding Y281 of human SLAMF1. |
| Isotype: | IgG |
| Form: | Liquid |
| Purification: | Purified through a protein A column, followed by two-step phosphospecific peptide affinity purification. |

Datasheet

Version: 3.0.0

Revision date: 10 Sep 2025



Storage: Aliquot and store at -20°C. Avoid repeated freeze/thaw cycles.

UniProt Primary AC: Q13291 ([UniProt](#), [ExPASy](#))

KEGG: hsa:6504

String: [9606.ENSP00000306190](#)

Molecular Weight: Calculated MW: 37.2 kDa

Buffer: PBS containing 0.09% sodium azide.

Note: THIS PRODUCT IS FOR RESEARCH USE ONLY. NOT FOR USE IN DIAGNOSTIC, THERAPEUTIC OR COSMETIC PROCEDURES. NOT FOR HUMAN OR ANIMAL CONSUMPTION.

For Reference Only