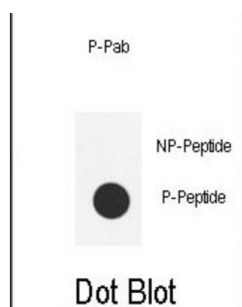


SRC (pY419) Antibody

Catalogue No.: abx032063



This proto-oncogene may play a role in the regulation of embryonic development and cell growth. This protein is a tyrosine-protein kinase whose activity can be inhibited by phosphorylation by c-SRC kinase.

Target:	SRC (pY419)
Clonality:	Polyclonal
Target Modification:	Tyr419
Modification:	Phosphorylation
Reactivity:	Human
Tested Applications:	ELISA, DB
Host:	Rabbit
Recommended dilutions:	DB: 1/500. Optimal dilutions/concentrations should be determined by the end user.
Conjugation:	Unconjugated
Immunogen:	KLH-conjugated synthetic phosphopeptide corresponding to amino acid residues surrounding Y419 of human SRC.
Isotype:	IgG
Form:	Liquid
Purification:	Purified through a protein A column, followed by two-step phosphospecific peptide affinity purification.
Storage:	Aliquot and store at -20°C. Avoid repeated freeze/thaw cycles.

Datasheet

Version: 3.0.0

Revision date: 15 Sep 2025



UniProt Primary AC: P12931 ([UniProt](#), [ExPASy](#))

Molecular Weight: Calculated MW: 59.8 kDa

Buffer: PBS containing 0.09% sodium azide.

Specificity: Predicted to react with Mouse, Rat, Cow, Pig, Zebrafish and Xenopus SRC.

Note: THIS PRODUCT IS FOR RESEARCH USE ONLY. NOT FOR USE IN DIAGNOSTIC, THERAPEUTIC OR COSMETIC PROCEDURES. NOT FOR HUMAN OR ANIMAL CONSUMPTION.

For Reference Only