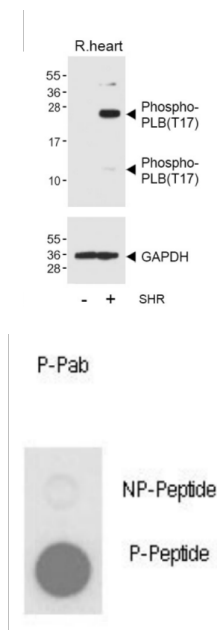


PLB (pT17) Antibody

Catalogue No.: abx032077



WB analysis of Rat heart tissue lysate and sponatneous hypertensive (SHR) Rat heart tissue lysate, using PLB (T17) antibody (upper) and GAPDH (lower).

Dot Blot analysis of PLB (pT17) using PLB T17 antibody (0.5 µg/ml). 50 ng phosphopeptide (P-Peptide) and non-phosphopeptide (NP-Peptide) per dot plot were adsorbed.

Phospholamban (PLB) is a 52 amino acid phosphoprotein which regulates the calcium pump of cardiac sarcoplasmic reticulum (SR). PLB is an oligomer of five identical subunits each having a cytoplasmic and transmembrane domain. The cytoplasmic domain (residues 1 to 25) contains the phosphorylation sites and is highly basic and readily cleaved by proteases; whereas the transmembrane domain (residues 25 to 52) is mostly hydrophobic, protease resistant and stabilizes the pentamer.

Target: PLB (pT17)

Clonality: Polyclonal

Target Modification: Thr17

Modification: Phosphorylation

Reactivity: Human, Rat

Tested Applications: ELISA, WB, DB

Host: Rabbit

Recommended dilutions: WB: 1/1000, DB: 1/500. Optimal dilutions/concentrations should be determined by the end user.

Conjugation: Unconjugated

Immunogen: KLH-conjugated synthetic phosphopeptide corresponding to amino acid residues surrounding T17 of human PLB.

Datasheet

Version: 4.0.0
Revision date: 11 Jun 2025



Isotype:	IgG
Form:	Liquid
Purification:	Purified through a protein A column, followed by two-step phosphospecific peptide affinity purification.
Storage:	Aliquot and store at -20°C. Avoid repeated freeze/thaw cycles.
UniProt Primary AC:	P26678 (UniProt , ExPASy)
GeneID:	5350
KEGG:	hsa:5350
String:	9606.ENSP00000350132
Buffer:	PBS containing 0.09% sodium azide.
Concentration:	0.5 mg/ml
Note:	THIS PRODUCT IS FOR RESEARCH USE ONLY. NOT FOR USE IN DIAGNOSTIC, THERAPEUTIC OR COSMETIC PROCEDURES. NOT FOR HUMAN OR ANIMAL CONSUMPTION.

For Reference Only