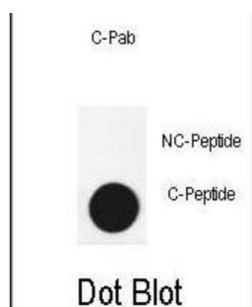


Autophagy-Related Protein 3 (APG3 (cleaved)) Antibody

Catalogue No.: abx032095



APG3 (cleaved) Antibody is a Rabbit Polyclonal antibody against APG3 (cleaved).

| | |
|-------------------------------|----------------------------------------------------------------------------------------------------------|
| Target: | Autophagy-Related Protein 3 (APG3 (cleaved)) |
| Clonality: | Polyclonal |
| Reactivity: | Human |
| Tested Applications: | ELISA, DB |
| Host: | Rabbit |
| Recommended dilutions: | DB: 1/500. Optimal dilutions/concentrations should be determined by the end user. |
| Conjugation: | Unconjugated |
| Immunogen: | KLH-conjugated synthetic peptide 90-104 AA selected from human APG3. |
| Isotype: | IgG |
| Form: | Liquid |
| Purification: | Purified through a protein A column, followed by two-step phosphospecific peptide affinity purification. |
| Storage: | Aliquot and store at -20°C. Avoid repeated freeze/thaw cycles. |
| UniProt Primary AC: | Q9NT62 (UniProt , ExPASy) |
| String: | 9606.ENSP00000283290 |
| Molecular Weight: | Calculated MW: 35.9 kDa |

Datasheet

Version: 4.0.0

Revision date: 08 Jun 2025



Buffer: PBS containing 0.09% sodium azide.

Specificity: Predicted to react with Mouse, Rat, Cow and Zebrafish ATG3.

Note: THIS PRODUCT IS FOR RESEARCH USE ONLY. NOT FOR USE IN DIAGNOSTIC, THERAPEUTIC OR COSMETIC PROCEDURES. NOT FOR HUMAN OR ANIMAL CONSUMPTION.

For Reference Only