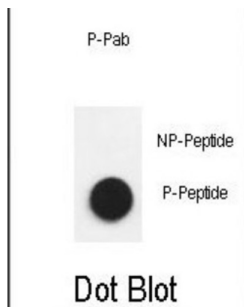


## Nephrin (pY1193) Antibody

Catalogue No.: abx032101



This gene encodes a member of the immunoglobulin family of cell adhesion molecules that functions in the glomerular filtration barrier in the kidney. The gene is primarily expressed in renal tissues, and the protein is a type-1 transmembrane protein found at the slit diaphragm of glomerular podocytes. The slit diaphragm is thought to function as an ultrafilter to exclude albumin and other plasma macromolecules in the formation of urine. Mutations in this gene result in Finnish-type congenital nephrosis 1, characterized by severe proteinuria and loss of the slit diaphragm and foot processes.

**Target:** Nephrin (pY1193)

**Clonality:** Polyclonal

**Target Modification:** Tyr1193

**Modification:** Phosphorylation

**Reactivity:** Human

**Tested Applications:** ELISA, DB

**Host:** Rabbit

**Recommended dilutions:** DB: 1/500. Optimal dilutions/concentrations should be determined by the end user.

**Conjugation:** Unconjugated

**Immunogen:** KLH-conjugated synthetic phosphopeptide corresponding to amino acid residues surrounding Y1193 of human Nephrin.

**Isotype:** IgG

**Form:** Liquid

**Purification:** Purified through a protein A column, followed by two-step phosphospecific peptide affinity purification.

# Datasheet

Version: 2.0.0

Revision date: 06 Oct 2025



**Storage:** Aliquot and store at -20°C. Avoid repeated freeze/thaw cycles.

**UniProt Primary AC:** O60500 ([UniProt](#), [ExPASy](#))

**KEGG:** hsa:4868

**String:** [9606.ENSP00000368190](#)

**Molecular Weight:** Calculated MW: 135 kDa

**Buffer:** PBS containing 0.09% sodium azide.

**Note:** THIS PRODUCT IS FOR RESEARCH USE ONLY. NOT FOR USE IN DIAGNOSTIC, THERAPEUTIC OR COSMETIC PROCEDURES. NOT FOR HUMAN OR ANIMAL CONSUMPTION.

For Reference Only