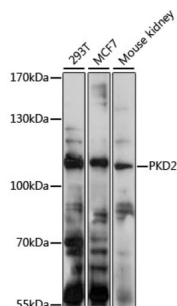


Protein Kinase D2 (PKD2) Antibody

Catalogue No.: abx002617



Western blot analysis of extracts of various cell lines using PKD2 Antibody (1/1000 dilution).

PKD2 Antibody is a Rabbit Polyclonal antibody against PKD2. This gene encodes a member of the polycystin protein family. The encoded protein is a multi-pass membrane protein that functions as a calcium permeable cation channel, and is involved in calcium transport and calcium signaling in renal epithelial cells. This protein interacts with polycystin 1, and they may be partners in a common signaling cascade involved in tubular morphogenesis. Mutations in this gene are associated with autosomal dominant polycystic kidney disease type 2.

Target: Protein Kinase D2 (PKD2)

Clonality: Polyclonal

Reactivity: Human, Mouse, Rat

Tested Applications: WB

Host: Rabbit

Recommended dilutions: WB: 1/500 - 1/1000. Optimal dilutions/concentrations should be determined by the end user.

Conjugation: Unconjugated

Immunogen: Recombinant fusion protein corresponding to human PKD2

Isotype: IgG

Form: Liquid

Purification: Purified by affinity chromatography.

Storage: Aliquot and store at -20°C. Avoid repeated freeze/thaw cycles.

UniProt Primary AC: Q13563 ([UniProt](#), [ExPASy](#))

Datasheet

Version: 4.0.0

Revision date: 23 Aug 2025



Gene Symbol: PKD2

GeneID: [5311](#)

NCBI Accession: NP_000288.1

KEGG: hsa:5311

String: [9606.ENSP00000237596](#)

Molecular Weight: Calculated MW: 53 kDa/73 kDa/98 kDa/103 kDa/109 kDa
Observed MW: 110 kDa

Buffer: PBS, pH 7.3, containing 0.01% thiomersal, 50% glycerol.

Concentration: 1 mg/ml

Note: THIS PRODUCT IS FOR RESEARCH USE ONLY. NOT FOR USE IN DIAGNOSTIC, THERAPEUTIC OR COSMETIC PROCEDURES. NOT FOR HUMAN OR ANIMAL CONSUMPTION.

For Reference Only