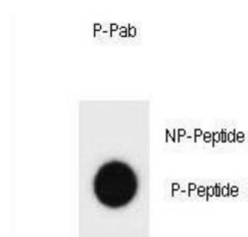


Mouse TSC1 (pS387) Antibody

Catalogue No.: abx032222



Dot Blot

In complex with TSC2, inhibits the nutrient-mediated or growth factor-stimulated phosphorylation of S6K1 and EIF4EBP1 by negatively regulating mTORC1 signaling (By similarity). Implicated as a tumor suppressor. Involved in microtubule-mediated protein transport, but this seems to be due to unregulated mTOR signaling (By similarity).

Target: Mouse TSC1 (pS387)

Clonality: Polyclonal

Target Modification: Ser387

Modification: Phosphorylation

Reactivity: Mouse

Tested Applications: ELISA, DB

Host: Rabbit

Recommended dilutions: DB: 1/500. Optimal dilutions/concentrations should be determined by the end user.

Conjugation: Unconjugated

Immunogen: KLH-conjugated synthetic phosphopeptide corresponding to amino acid residues surrounding S387 of mouse TSC1.

Isotype: IgG

Form: Liquid

Purification: Purified through a protein A column, followed by two-step phosphospecific peptide affinity purification.

Storage: Aliquot and store at -20°C. Avoid repeated freeze/thaw cycles.

Datasheet

Version: 2.0.0

Revision date: 30 Sep 2025



UniProt Primary AC: Q9EP53 ([UniProt](#), [ExPASy](#))

String: [10090.ENSMUSP00000109500](#)

Molecular Weight: Calculated MW: 129 kDa

Buffer: PBS containing 0.09% sodium azide.

Specificity: Predicted to react with Rat Tsc1.

Note: THIS PRODUCT IS FOR RESEARCH USE ONLY. NOT FOR USE IN DIAGNOSTIC, THERAPEUTIC OR COSMETIC PROCEDURES. NOT FOR HUMAN OR ANIMAL CONSUMPTION.

For Reference Only