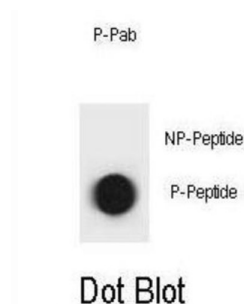


## Mouse TSC1 (pT310) Antibody

Catalogue No.: abx032227



In complex with TSC2, inhibits the nutrient-mediated or growth factor-stimulated phosphorylation of S6K1 and EIF4EBP1 by negatively regulating mTORC1 signaling (By similarity). Implicated as a tumor suppressor. Involved in microtubule-mediated protein transport, but this seems to be due to unregulated mTOR signaling (By similarity).

<b>Target:</b>	Mouse TSC1 (pT310)
<b>Clonality:</b>	Polyclonal
<b>Target Modification:</b>	Thr310
<b>Modification:</b>	Phosphorylation
<b>Reactivity:</b>	Mouse
<b>Tested Applications:</b>	ELISA, DB
<b>Host:</b>	Rabbit
<b>Recommended dilutions:</b>	DB: 1/500. Optimal dilutions/concentrations should be determined by the end user.
<b>Conjugation:</b>	Unconjugated
<b>Immunogen:</b>	KLH-conjugated synthetic phosphopeptide corresponding to amino acid residues surrounding T310 of mouse TSC1.
<b>Isotype:</b>	IgG
<b>Form:</b>	Liquid
<b>Purification:</b>	Purified through a protein A column, followed by two-step phosphospecific peptide affinity purification.
<b>Storage:</b>	Aliquot and store at -20°C. Avoid repeated freeze/thaw cycles.

# Datasheet

Version: 2.0.0

Revision date: 19 Aug 2025



**UniProt Primary AC:** Q9EP53 ([UniProt](#), [ExPASy](#))

**String:** [10090.ENSMUSP00000109500](#)

**Molecular Weight:** Calculated MW: 129 kDa

**Buffer:** PBS containing 0.09% sodium azide.

**Note:** THIS PRODUCT IS FOR RESEARCH USE ONLY. NOT FOR USE IN DIAGNOSTIC, THERAPEUTIC OR COSMETIC PROCEDURES. NOT FOR HUMAN OR ANIMAL CONSUMPTION.

For Reference Only