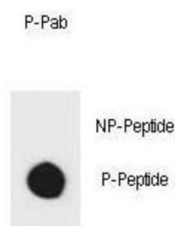


Mouse TSC2 (pS1155) Antibody

Catalogue No.: abx032230



Dot Blot

In complex with TSC1, inhibits the nutrient-mediated or growth factor-stimulated phosphorylation of S6K1 and EIF4EBP1 by negatively regulating mTORC1 signaling. Acts as a GTPase-activating protein (GAP) for the small GTPase RHEB, a direct activator of the protein kinase activity of mTORC1. Implicated as a tumor suppressor. Involved in microtubule-mediated protein transport, but this seems to be due to unregulated mTOR signaling (By similarity). Specifically stimulates the intrinsic GTPase activity of the Ras-related protein RAP1A and RAB5. Suggesting a possible mechanism for its role in regulating cellular growth (By similarity).

Target: Mouse TSC2 (pS1155)

Clonality: Polyclonal

Target Modification: Ser1155

Modification: Phosphorylation

Reactivity: Mouse

Tested Applications: ELISA, DB

Host: Rabbit

Recommended dilutions: DB: 1/500. Optimal dilutions/concentrations should be determined by the end user.

Conjugation: Unconjugated

Immunogen: KLH-conjugated synthetic phosphopeptide corresponding to amino acid residues surrounding S1155 of mouse TSC2.

Isotype: IgG

Form: Liquid

Purification: Purified through a protein A column, followed by two-step phosphospecific peptide affinity purification.

Datasheet

Version: 2.0.0

Revision date: 19 Aug 2025



Storage: Aliquot and store at -20°C. Avoid repeated freeze/thaw cycles.

UniProt Primary AC: Q61037 ([UniProt](#), [ExPASy](#))

String: [10090.ENSMUSP00000094986](#)

Molecular Weight: Calculated MW: 202 kDa

Buffer: PBS containing 0.09% sodium azide.

Note: THIS PRODUCT IS FOR RESEARCH USE ONLY. NOT FOR USE IN DIAGNOSTIC, THERAPEUTIC OR COSMETIC PROCEDURES. NOT FOR HUMAN OR ANIMAL CONSUMPTION.

For Reference Only