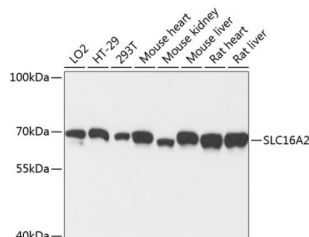


## Solute Carrier Family 16 Member 2 (SLC16A2) Antibody

Catalogue No.: abx002625



Western blot analysis of extracts of various cell lines using SLC16A2 Antibody (1/3000 dilution).

SLC16A2 Antibody is a Rabbit Polyclonal antibody against SLC16A2. This gene encodes an integral membrane protein that functions as a transporter of thyroid hormone. The encoded protein facilitates the cellular importation of thyroxine (T4), triiodothyronine (T3), reverse triiodothyronine (rT3) and diiodothyronine (T2). This gene is expressed in many tissues and likely plays an important role in the development of the central nervous system. Loss of function mutations in this gene are associated with psychomotor retardation in males while females exhibit no neurological defects and more moderate thyroid-deficient phenotypes. This gene is subject to X-chromosome inactivation. Mutations in this gene are the cause of Allan-Herndon-Dudley syndrome.

**Target:** Solute Carrier Family 16 Member 2 (SLC16A2)

**Clonality:** Polyclonal

**Reactivity:** Human, Mouse, Rat

**Tested Applications:** WB

**Host:** Rabbit

**Recommended dilutions:** WB: 1/500 - 1/2000. Optimal dilutions/concentrations should be determined by the end user.

**Conjugation:** Unconjugated

**Immunogen:** Recombinant fusion protein corresponding to human SLC16A2

**Isotype:** IgG

**Form:** Liquid

**Purification:** Purified by affinity chromatography.

**Storage:** Aliquot and store at -20°C. Avoid repeated freeze/thaw cycles.

**UniProt Primary AC:** P36021 ([UniProt](#), [ExPASy](#))

# Datasheet

Version: 4.0.0

Revision date: 10 Sep 2025



**Gene Symbol:** SLC16A2

**GeneID:** [6567](#)

**NCBI Accession:** NP\_006508.2

**KEGG:** hsa:6567

**String:** [9606.ENSP00000465734](#)

**Molecular Weight:** Calculated MW: 59 kDa  
Observed MW: 70 kDa

**Buffer:** PBS, pH 7.3, containing 0.02% sodium azide, 50% glycerol.

**Concentration:** 1 mg/ml

**Note:** THIS PRODUCT IS FOR RESEARCH USE ONLY. NOT FOR USE IN DIAGNOSTIC, THERAPEUTIC OR COSMETIC PROCEDURES. NOT FOR HUMAN OR ANIMAL CONSUMPTION.

For Reference Only