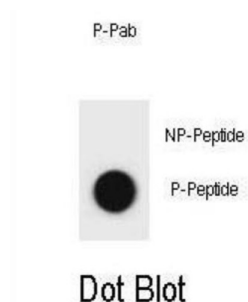


## TSC1 (pS682) Antibody

Catalogue No.: abx032264



This gene encodes a growth inhibitory protein thought to play a role in the stabilization of tuberin. Mutations in this gene have been associated with tuberous sclerosis. Alternative splicing results in multiple transcript variants.

<b>Target:</b>	TSC1 (pS682)
<b>Clonality:</b>	Polyclonal
<b>Target Modification:</b>	Ser682
<b>Modification:</b>	Phosphorylation
<b>Reactivity:</b>	Human
<b>Tested Applications:</b>	ELISA, DB
<b>Host:</b>	Rabbit
<b>Recommended dilutions:</b>	DB: 1/500. Optimal dilutions/concentrations should be determined by the end user.
<b>Conjugation:</b>	Unconjugated
<b>Immunogen:</b>	KLH-conjugated synthetic phosphopeptide corresponding to amino acid residues surrounding S682 of human TSC1.
<b>Isotype:</b>	IgG
<b>Form:</b>	Liquid
<b>Purification:</b>	Purified through a protein A column, followed by two-step phosphospecific peptide affinity purification.
<b>Storage:</b>	Aliquot and store at -20°C. Avoid repeated freeze/thaw cycles.

# Datasheet

Version: 2.0.0

Revision date: 08 Sep 2025



**UniProt Primary AC:** Q92574 ([UniProt](#), [ExPASy](#))

**KEGG:** hsa:7248

**String:** [9606.ENSP00000298552](#)

**Molecular Weight:** Calculated MW: 130 kDa

**Buffer:** PBS containing 0.09% sodium azide.

**Specificity:** Predicted to react with Rat TSC1.

**Note:** THIS PRODUCT IS FOR RESEARCH USE ONLY. NOT FOR USE IN DIAGNOSTIC, THERAPEUTIC OR COSMETIC PROCEDURES. NOT FOR HUMAN OR ANIMAL CONSUMPTION.

For Reference Only