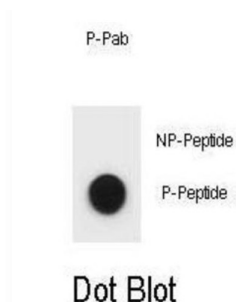


## ULK1 (pS467) Antibody

Catalogue No.: abx032266



ULK1 is involved in autophagy. Required for autophagosome formation (By similarity). Target of the TOR kinase signaling pathway that regulates autophagy through the control of phosphorylation status of ATG13/KIAA0652 and ULK1, and the regulation of the ATG13-ULK1-RB1CC1 complex (By similarity). Phosphorylates ATG13/KIAA0652. Involved in axon growth (By similarity). Plays an essential role in neurite extension of cerebellar granule cells (By similarity).

**Target:** ULK1 (pS467)

**Clonality:** Polyclonal

**Target Modification:** Ser467

**Modification:** Phosphorylation

**Reactivity:** Human

**Tested Applications:** ELISA, DB

**Host:** Rabbit

**Recommended dilutions:** DB: 1/500. Optimal dilutions/concentrations should be determined by the end user.

**Conjugation:** Unconjugated

**Immunogen:** KLH-conjugated synthetic phosphopeptide corresponding to amino acid residues surrounding S467 of human ULK1.

**Isotype:** IgG

**Form:** Liquid

**Purification:** Purified through a protein A column, followed by two-step phosphospecific peptide affinity purification.

**Storage:** Aliquot and store at -20°C. Avoid repeated freeze/thaw cycles.

# Datasheet

Version: 2.0.0

Revision date: 04 Sep 2025



**UniProt Primary AC:** O75385 ([UniProt](#), [ExPASy](#))

**KEGG:** hsa:8408

**String:** [9606.ENSP00000324560](#)

**Molecular Weight:** Calculated MW: 113 kDa

**Buffer:** PBS containing 0.09% sodium azide.

**Note:** THIS PRODUCT IS FOR RESEARCH USE ONLY. NOT FOR USE IN DIAGNOSTIC, THERAPEUTIC OR COSMETIC PROCEDURES. NOT FOR HUMAN OR ANIMAL CONSUMPTION.

For Reference Only