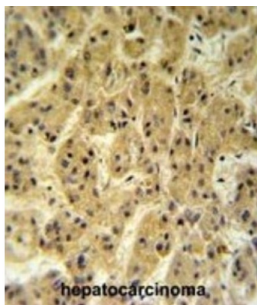


Sec24 Family, Member A (SC24A) Antibody

Catalogue No.: abx032289



SC24A is a component of coat protein II (COPII; see MIM 601924) coated vesicles that mediate protein transport from the endoplasmic reticulum. SEC24A is 1 of several mammalian proteins that show structural and functional homology to yeast Sec24.

Target: Sec24 Family, Member A (SC24A)

Clonality: Polyclonal

Reactivity: Human

Tested Applications: ELISA, WB, IHC

Host: Rabbit

Recommended dilutions: WB: 1/1000, IHC-P: 1/50 - 1/100. Not tested in IHC-F. Optimal dilutions/concentrations should be determined by the end user.

Conjugation: Unconjugated

Immunogen: KLH-conjugated synthetic peptide between 636-663 amino acids from the Central region of human SC24A.

Isotype: IgG

Form: Liquid

Datasheet

Version: 4.0.0
Revision date: 02 Oct 2025



Purification:	Purified through a protein A column, followed by peptide affinity purification.
Storage:	Aliquot and store at -20°C. Avoid repeated freeze/thaw cycles.
UniProt Primary AC:	O95486 (UniProt , ExPASy)
Gene Symbol:	SEC24A
KEGG:	hsa:10802
String:	9606.ENSP00000381823
Molecular Weight:	Calculated MW: 120 kDa
Buffer:	PBS containing 0.09% sodium azide.
Note:	THIS PRODUCT IS FOR RESEARCH USE ONLY. NOT FOR USE IN DIAGNOSTIC, THERAPEUTIC OR COSMETIC PROCEDURES. NOT FOR HUMAN OR ANIMAL CONSUMPTION.

For Reference Only