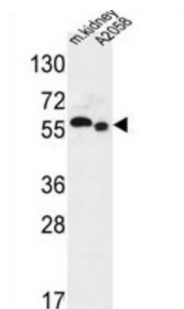


## S47A2 Antibody

Catalogue No.: abx032293



S47A2 belongs to a family of transporters involved in excretion of toxic electrolytes, both endogenous and exogenous, through urine and bile. This transporter family shares homology with the bacterial MATE (multidrug and toxin extrusion) protein family responsible for drug resistance. This gene is one of two members of the MATE transporter family located near each other on chromosome 17.

**Target:** S47A2

**Clonality:** Polyclonal

**Reactivity:** Rat

**Tested Applications:** ELISA, WB

**Host:** Rabbit

**Recommended dilutions:** WB: 1/500. Optimal dilutions/concentrations should be determined by the end user.

**Conjugation:** Unconjugated

**Immunogen:** KLH-conjugated synthetic peptide between 125-153 amino acids from the N-terminal region of human S47A2.

**Isotype:** IgG

**Form:** Liquid

**Purification:** Purified through a protein A column, followed by peptide affinity purification.

**Storage:** Aliquot and store at -20°C. Avoid repeated freeze/thaw cycles.

**UniProt Primary AC:** Q86VL8 ([UniProt](#), [ExPASy](#))

**Gene Symbol:** SLC47A2

# Datasheet

Version: 3.0.0

Revision date: 30 Aug 2025



**KEGG:** hsa:146802

**String:** [9606.ENSP00000326671](#)

**Molecular Weight:** Calculated MW: 65.1 kDa

**Buffer:** PBS containing 0.09% sodium azide.

**Specificity:** Predicted to react with Human, Mouse SLC47A2.

**Note:** THIS PRODUCT IS FOR RESEARCH USE ONLY. NOT FOR USE IN DIAGNOSTIC, THERAPEUTIC OR COSMETIC PROCEDURES. NOT FOR HUMAN OR ANIMAL CONSUMPTION.

For Reference Only