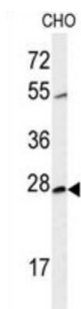
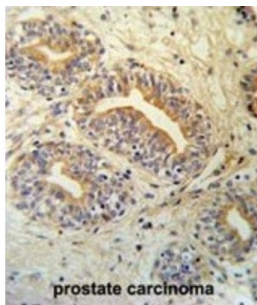


## Spliceosome-Associated Protein CWC15 Homolog (CWC15) Antibody

Catalogue No.: abx032315



CWC15 involved in pre-mRNA splicing.

<b>Target:</b>	Spliceosome-Associated Protein CWC15 Homolog (CWC15)
<b>Clonality:</b>	Polyclonal
<b>Reactivity:</b>	Human, Hamster
<b>Tested Applications:</b>	ELISA, WB, IHC
<b>Host:</b>	Rabbit
<b>Recommended dilutions:</b>	WB: 1/1000, IHC-P: 1/50 - 1/100. Not tested in IHC-F. Optimal dilutions/concentrations should be determined by the end user.
<b>Conjugation:</b>	Unconjugated
<b>Immunogen:</b>	KLH-conjugated synthetic peptide between 123-152 amino acids from the Central region of human CWC15.
<b>Isotype:</b>	IgG
<b>Form:</b>	Liquid
<b>Purification:</b>	Purified through a protein A column, followed by peptide affinity purification.

# Datasheet

Version: 3.0.0

Revision date: 10 Sep 2025



**Storage:** Aliquot and store at -20°C. Avoid repeated freeze/thaw cycles.

**UniProt Primary AC:** Q9P013 ([UniProt](#), [ExPASy](#))

**Gene Symbol:** CWC15

**String:** [9606.ENSP00000475615](#)

**Molecular Weight:** Calculated MW: 26.6 kDa

**Buffer:** PBS containing 0.09% sodium azide.

**Specificity:** Predicted to react with Mouse, Rat and Cow CWC15.

**Note:** THIS PRODUCT IS FOR RESEARCH USE ONLY. NOT FOR USE IN DIAGNOSTIC, THERAPEUTIC OR COSMETIC PROCEDURES. NOT FOR HUMAN OR ANIMAL CONSUMPTION.

For Reference Only