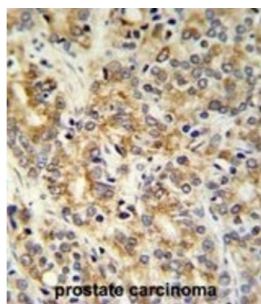


## Thioredoxin Domain-Containing Protein 12 (TXNDC12) Antibody

Catalogue No.: abx032327



TXNDC12 belongs to the thioredoxin superfamily (see TXN; MIM 187700). Members of this superfamily possess a thioredoxin fold with a consensus active-site sequence (CxxC) and have roles in redox regulation, defense against oxidative stress, refolding of disulfide-containing proteins, and regulation of transcription factors.

**Target:** Thioredoxin Domain-Containing Protein 12 (TXNDC12)

**Clonality:** Polyclonal

**Reactivity:** Human, Mouse

**Tested Applications:** ELISA, WB, IHC

**Host:** Rabbit

**Recommended dilutions:** WB: 1/1000, IHC-P: 1/50 - 1/100. Not tested in IHC-F. Optimal dilutions/concentrations should be determined by the end user.

# Datasheet

Version: 3.0.0  
Revision date: 02 Oct 2025



<b>Conjugation:</b>	Unconjugated
<b>Immunogen:</b>	KLH-conjugated synthetic peptide between 144-172 amino acids from the C-terminal region of human TXNDC12.
<b>Isotype:</b>	IgG
<b>Form:</b>	Liquid
<b>Purification:</b>	Purified through a protein A column, followed by peptide affinity purification.
<b>Storage:</b>	Aliquot and store at -20°C. Avoid repeated freeze/thaw cycles.
<b>UniProt Primary AC:</b>	O95881 ( <a href="#">UniProt</a> , <a href="#">ExPASy</a> )
<b>Gene Symbol:</b>	TXNDC12
<b>KEGG:</b>	hsa:51060
<b>String:</b>	<a href="#">9606.ENSP00000360688</a>
<b>Molecular Weight:</b>	Calculated MW: 19.2 kDa
<b>Buffer:</b>	PBS containing 0.09% sodium azide.
<b>Note:</b>	THIS PRODUCT IS FOR RESEARCH USE ONLY. NOT FOR USE IN DIAGNOSTIC, THERAPEUTIC OR COSMETIC PROCEDURES. NOT FOR HUMAN OR ANIMAL CONSUMPTION.