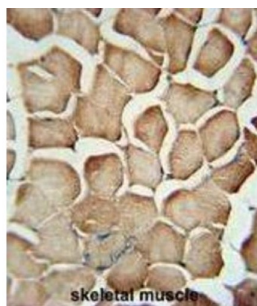


## AP-1 Complex Subunit Sigma-1A (AP1S1) Antibody

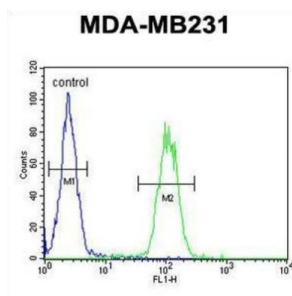
Catalogue No.: abx032378



WB analysis of MD-MB231 cell line lysates (35 µg/ml), using AP1S1 antibody.



IHC-P analysis of Human skeletal muscle tissue, using AP1S1 antibody.



Flow cytometry analysis of MDA-MB231 cells (right histogram) compared to a negative control cell (left histogram), using AP1S1 antibody. FITC-conjugated goat-anti-rabbit secondary antibody was used for the analysis.

AP-1 Complex Subunit Sigma-1A (AP1S1) is part of the clathrin coat assembly complex which links clathrin to receptors in coated vesicles. These vesicles are involved in endocytosis and Golgi processing. This protein, as well as beta-prime-adaptin, gamma-adaptin, and the medium (mu) chain AP47, form the AP-1 assembly protein complex located at the Golgi vesicle.

**Target:** AP-1 Complex Subunit Sigma-1A (AP1S1)

**Clonality:** Polyclonal

**Reactivity:** Human

**Tested Applications:** ELISA, WB, IHC, FCM

**Host:** Rabbit

**Recommended dilutions:** WB: 1/1000, IHC-P: 1/50 - 1/100, FCM: 1/10 - 1/50. Not tested in IHC-F. Optimal dilutions/concentrations should be determined by the end user.

# Datasheet

Version: 3.0.0  
Revision date: 13 Jun 2025



<b>Conjugation:</b>	Unconjugated
<b>Immunogen:</b>	KLH-conjugated synthetic peptide between 5-34 amino acids from the N-terminal region of human AP1S1.
<b>Isotype:</b>	IgG
<b>Form:</b>	Liquid
<b>Purification:</b>	Purified through a protein A column, followed by peptide affinity purification.
<b>Storage:</b>	Aliquot and store at -20°C. Avoid repeated freeze/thaw cycles.
<b>UniProt Primary AC:</b>	P61966 ( <a href="#">UniProt</a> , <a href="#">ExPASy</a> )
<b>KEGG:</b>	hsa:1174
<b>String:</b>	<a href="#">9606.ENSP00000336666</a>
<b>Molecular Weight:</b>	Calculated MW: 18.7 kDa
<b>Buffer:</b>	PBS containing 0.09% sodium azide.
<b>Specificity:</b>	Predicted to react with Mouse and Cow AP1S1.
<b>Concentration:</b>	0.45 mg/ml
<b>Note:</b>	THIS PRODUCT IS FOR RESEARCH USE ONLY. NOT FOR USE IN DIAGNOSTIC, THERAPEUTIC OR COSMETIC PROCEDURES. NOT FOR HUMAN OR ANIMAL CONSUMPTION.