

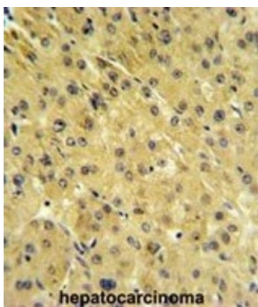
Prostate-Specific Membrane Antigen-Like Protein (PSMAL) Antibody

Catalogue No.: abx032399

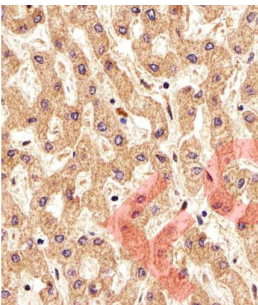


WB analysis of K562 cell lysates, using PSMAL antibody.

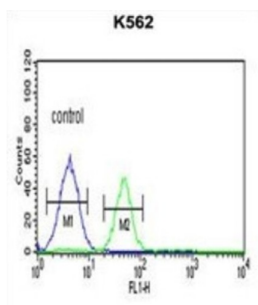
WB analysis of human kidney tissue lysate, using PSMAL antibody (1/1000 dilution).



IHC analysis in formalin-fixed paraffin-embedded hepatocarcinoma. with DAB staining, using PSMAL antibody.



IHC analysis of human liver tissue, with DAB staining, using PSMAL antibody (1/25 dilution).



Flow cytometry analysis of K562 cells (right) compared to a negative control cell (left), using PSMAL antibody and FITC-conjugated Goat anti-Rabbit secondary antibody.

Datasheet

Version: 4.0.0
Revision date: 21 Jul 2025



PSMAL has both folate hydrolase and N-acetylated-alpha-linked-acidic dipeptidase (NAALADase) activity (By similarity). PSMAL exhibits a dipeptidyl-peptidase IV type activity.

Target:	Prostate-Specific Membrane Antigen-Like Protein (PSMAL)
Clonality:	Polyclonal
Reactivity:	Human
Tested Applications:	ELISA, WB, IHC, FCM
Host:	Rabbit
Recommended dilutions:	WB: 1/1000, IHC-P: 1/50 - 1/100, FCM: 1/10 - 1/50. Not tested in IHC-F. Optimal dilutions/concentrations should be determined by the end user.
Conjugation:	Unconjugated
Immunogen:	KLH-conjugated synthetic peptide between 155-183 amino acids from the Central region of human PSMAL.
Isotype:	IgG
Form:	Liquid
Purification:	Purified through a protein A column, followed by peptide affinity purification.
Storage:	Aliquot and store at -20°C. Avoid repeated freeze/thaw cycles.
UniProt Primary AC:	Q9HBA9 (UniProt , ExPASy)
Gene Symbol:	FOLH1B
Molecular Weight:	Calculated MW: 50 kDa
Buffer:	PBS containing 0.09% sodium azide.
Note:	THIS PRODUCT IS FOR RESEARCH USE ONLY. NOT FOR USE IN DIAGNOSTIC, THERAPEUTIC OR COSMETIC PROCEDURES. NOT FOR HUMAN OR ANIMAL CONSUMPTION.