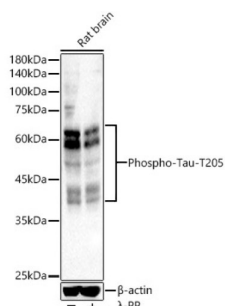


# Microtubule-Associated Protein Tau Phospho-Thr205 (MAPT pT205) Antibody

Catalogue No.: abx000220



Western blot analysis of lysates from Rat brain, using Phospho-Tau-T205 Antibody at 1/2000 dilution. Secondary antibody: HRP-conjugated Goat anti-Rabbit IgG (H+L) at 1/10000 dilution. Lysates/proteins: 25 µg per lane. Blocking buffer: 3% nonfat dry milk in TBST. Exposure time: 5s.

MAPT (pT205) Antibody is a Rabbit Polyclonal antibody against MAPT (pT205). This gene encodes the microtubule-associated protein tau (MAPT) whose transcript undergoes complex, regulated alternative splicing, giving rise to several mRNA species. MAPT transcripts are differentially expressed in the nervous system, depending on stage of neuronal maturation and neuron type. MAPT gene mutations have been associated with several neurodegenerative disorders such as Alzheimer's disease, Pick's disease, frontotemporal dementia, cortico-basal degeneration and progressive supranuclear palsy.

<b>Target:</b>	Microtubule-Associated Protein Tau Phospho-Thr205 (MAPT pT205)
<b>Clonality:</b>	Polyclonal
<b>Target Modification:</b>	Thr205
<b>Modification:</b>	Phosphorylation
<b>Reactivity:</b>	Human, Mouse, Rat
<b>Tested Applications:</b>	ELISA, WB
<b>Host:</b>	Rabbit
<b>Recommended dilutions:</b>	ELISA: 1 µg/ml, WB: 1/1000 - 1/5000. Optimal dilutions/concentrations should be determined by the end user.
<b>Conjugation:</b>	Unconjugated
<b>Immunogen:</b>	A synthetic phosphorylated peptide around T205 of human Tau.
<b>Isotype:</b>	IgG
<b>Form:</b>	Liquid
<b>Purification:</b>	Purified by affinity chromatography.

# Datasheet

Version: 6.0.0  
Revision date: 09 Jun 2025



**Storage:** Aliquot and store at -20°C. Avoid repeated freeze/thaw cycles.

**UniProt Primary AC:** P10636 ([UniProt](#), [ExPASy](#))

**Gene Symbol:** MAPT

**GeneID:** [4137](#)

**OMIM:** [157140](#)

**NCBI Accession:** NP\_001190181.1

**HGNC:** 6893

**KEGG:** hsa:4137

**Ensembl:** ENSG00000186868

**String:** [9606.ENSP00000340820](#)

**Molecular Weight:** Calculated MW: 79 kDa  
Observed MW: 50-80 kDa

**Buffer:** PBS, pH 7.3, containing 0.05% Proclin-300, 50% glycerol.

**Concentration:** > 0.2 mg/ml

**Note:** THIS PRODUCT IS FOR RESEARCH USE ONLY. NOT FOR USE IN DIAGNOSTIC, THERAPEUTIC OR COSMETIC PROCEDURES. NOT FOR HUMAN OR ANIMAL CONSUMPTION.