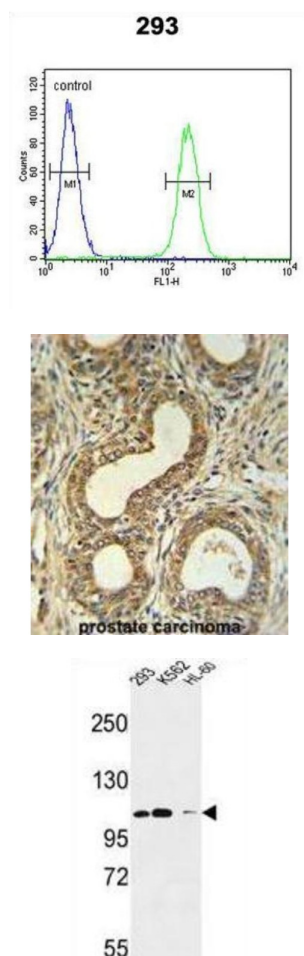


Roundabout 4 Antibody

Catalogue No.: abx032411



Roundabout 4 is receptor for Slit proteins, at least for SLIT2, and seems to be involved in angiogenesis and vascular patterning. This protein may mediate the inhibition of primary endothelial cell migration by Slit proteins.

Target: Roundabout 4

Clonality: Polyclonal

Reactivity: Human

Tested Applications: ELISA, WB, IHC, FCM

Host: Rabbit

Recommended dilutions: WB: 1/1000, IHC-P: 1/50 - 1/100, FCM: 1/10 - 1/50. Not tested in IHC-F. Optimal dilutions/concentrations should be determined by the end user.

Datasheet

Version: 2.0.0

Revision date: 30 Sep 2025



Conjugation:	Unconjugated
Immunogen:	KLH-conjugated synthetic peptide between 236-264 amino acids from the N-terminal region of human Roundabout 4.
Isotype:	IgG
Form:	Liquid
Purification:	Purified through a protein A column, followed by peptide affinity purification.
Storage:	Aliquot and store at -20°C. Avoid repeated freeze/thaw cycles.
UniProt Primary AC:	Q8WZ75 (UniProt , ExPASy)
Gene Symbol:	ROBO4
NCBI Accession:	NP_061928.4
Molecular Weight:	Calculated MW: 107 kDa
Buffer:	PBS containing 0.09% sodium azide.
Note:	THIS PRODUCT IS FOR RESEARCH USE ONLY. NOT FOR USE IN DIAGNOSTIC, THERAPEUTIC OR COSMETIC PROCEDURES. NOT FOR HUMAN OR ANIMAL CONSUMPTION.