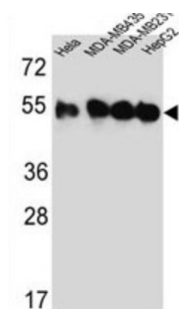
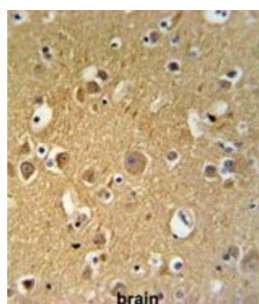


Tubulin Beta-2C Chain (TUBB2C) Antibody

Catalogue No.: abx032420



TUBB2C is the major constituent of microtubules. It binds two moles of GTP, one at an exchangeable site on the beta chain and one at a non-exchangeable site on the alpha-chain.

Target: Tubulin Beta-2C Chain (TUBB2C)

Clonality: Polyclonal

Reactivity: Human

Tested Applications: ELISA, WB, IHC

Host: Rabbit

Recommended dilutions: WB: 1/1000, IHC-P: 1/50 - 1/100. Not tested in IHC-F. Optimal dilutions/concentrations should be determined by the end user.

Conjugation: Unconjugated

Immunogen: KLH-conjugated synthetic peptide between 99-125 amino acids from the Central region of human TUBB2C.

Isotype: IgG

Form: Liquid

Datasheet

Version: 3.0.0
Revision date: 02 Sep 2025



Purification:	Purified through a protein A column, followed by peptide affinity purification.
Storage:	Aliquot and store at -20°C. Avoid repeated freeze/thaw cycles.
UniProt Primary AC:	P68371 (UniProt , ExPASy)
KEGG:	hsa:10383
String:	9606.ENSP00000341289
Molecular Weight:	Calculated MW: 49.8 kDa
Buffer:	PBS containing 0.09% sodium azide.
Specificity:	Predicted to react with Mouse, Rat, Cow, Pig, Hamster, <i>Drosophila</i> and Xenopus TUBB4B.
Note:	THIS PRODUCT IS FOR RESEARCH USE ONLY. NOT FOR USE IN DIAGNOSTIC, THERAPEUTIC OR COSMETIC PROCEDURES. NOT FOR HUMAN OR ANIMAL CONSUMPTION.

For Reference Only