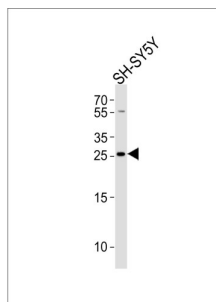


Probable Palmitoyltransferase ZDHHC21 (ZDHHC21) Antibody

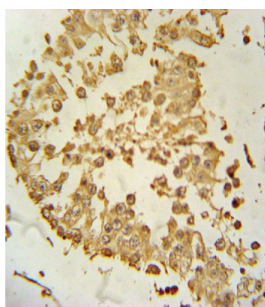
Catalogue No.: abx032430



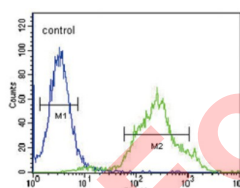
Western blot analysis of lysate from SH-SY5Y cell line, using ZDHHC21 Antibody (N-term). ZDHHC21 Antibody was diluted at 1:1000. A goat anti-rabbit IgG H&L (HRP) at 1:10000 dilution was used as the secondary antibody. Lysate at 20ug.



Western blot analysis of ZDHHC21 Antibody (N-term) in mouse liver tissue lysates (35ug/lane). ZDHHC21 was detected using the purified Polyclonal antibody.



Immunohistochemistry analysis of ZDHHC21 Antibody (N-term) in formalin fixed and paraffin embedded human testis tissue followed by peroxidase conjugation of the secondary antibody and DAB staining.



Flow Cytometric analysis of ZDHHC21 Antibody (N-term) 293 cells (right histogram) compared to a negative control cell (left histogram). FITC-conjugated goat-anti-rabbit secondary antibodies were used for the analysis.

ZDHHC21 Antibody is a Rabbit polyclonal against ZDHHC21.

Target: Probable Palmitoyltransferase ZDHHC21 (ZDHHC21)

Clonality: Polyclonal

Reactivity: Human, Mouse

Datasheet

Version: 4.0.0
Revision date: 13 Aug 2025



Tested Applications:	ELISA, WB, IHC, FCM
Host:	Rabbit
Recommended dilutions:	WB: 1/1000, IHC-P: 1/10 - 1/50, FCM: 1/10 - 1/50. Not tested in IHC-F. Optimal dilutions/concentrations should be determined by the end user.
Conjugation:	Unconjugated
Immunogen:	KLH-conjugated synthetic peptide between 59-87 amino acids from the N-terminal region of human ZDHHC21.
Isotype:	IgG
Form:	Liquid
Purification:	Purified through a protein A column, followed by peptide affinity purification.
Storage:	Aliquot and store at -20°C. Avoid repeated freeze/thaw cycles.
UniProt Primary AC:	Q8IVQ6 (UniProt , ExPASy)
Gene Symbol:	ZDHHC21
GeneID:	340481
KEGG:	hsa:340481
String:	9606.ENSP00000370303
Molecular Weight:	Calculated MW: 31.4 kDa
Buffer:	PBS containing 0.09% sodium azide.
Specificity:	Predicted to react with Cow ZDHHC21.
Note:	THIS PRODUCT IS FOR RESEARCH USE ONLY. NOT FOR USE IN DIAGNOSTIC, THERAPEUTIC OR COSMETIC PROCEDURES. NOT FOR HUMAN OR ANIMAL CONSUMPTION.