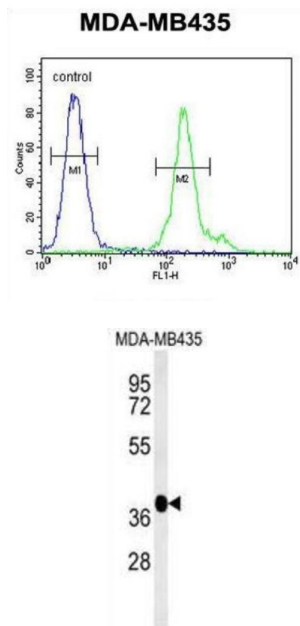


F-Box And Leucine-Rich Repeat Protein 14 (FBXL14) Antibody

Catalogue No.: abx032443



FBXL14 is members of the F-box protein family, such as FBXL14, are characterized by an approximately 40-amino acid F-box motif. SCF complexes, formed by SKP1 (MIM 601434), cullin (see CUL1; MIM 603134), and F-box proteins, act as protein-ubiquitin ligases. F-box proteins interact with SKP1 through the F box, and they interact with ubiquitination targets through other protein interaction domains.

Target: F-Box And Leucine-Rich Repeat Protein 14 (FBXL14)

Clonality: Polyclonal

Reactivity: Human

Tested Applications: FCM

Host: Rabbit

Recommended dilutions: Optimal dilutions/concentrations should be determined by the end user.

Conjugation: Unconjugated

Immunogen: KLH-conjugated synthetic peptide between 379-407 amino acids from the C-terminal region of human FBXL14.

Isotype: IgG

Form: Liquid

Datasheet

Version: 1.0.0

Revision date: 24 May 2025



Purification:	Purified through a protein A column, followed by peptide affinity purification.
Storage:	Aliquot and store at -20°C. Avoid repeated freeze/thaw cycles.
UniProt Primary AC:	Q8N1E6 (UniProt , ExPASy)
Gene Symbol:	FBXL14
KEGG:	hsa:144699
String:	9606.ENSP00000344855
Buffer:	PBS containing 0.09% sodium azide.
Note:	THIS PRODUCT IS FOR RESEARCH USE ONLY. NOT FOR USE IN DIAGNOSTIC, THERAPEUTIC OR COSMETIC PROCEDURES. NOT FOR HUMAN OR ANIMAL CONSUMPTION.

For Reference Only