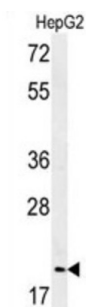
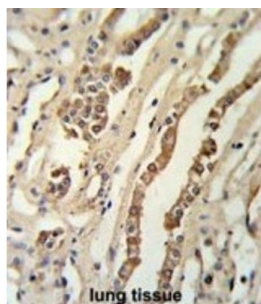


Geminin (GMNN) Antibody

Catalogue No.: abx032445



GMNN inhibits DNA replication by preventing the incorporation of MCM complex into prereplication complex (pre-RC). It is degraded during the mitotic phase of the cell cycle. Its destruction at the metaphase-anaphase transition permits replication in the succeeding cell cycle.

Target: Geminin (GMNN)

Clonality: Polyclonal

Reactivity: Human

Tested Applications: ELISA, WB, IHC

Host: Rabbit

Recommended dilutions: WB: 1/1000, IHC-P: 1/50 - 1/100. Not tested in IHC-F. Optimal dilutions/concentrations should be determined by the end user.

Conjugation: Unconjugated

Immunogen: KLH-conjugated synthetic peptide between 96-123 amino acids from the Central region of human GMNN.

Isotype: IgG

Form: Liquid

Datasheet

Version: 4.0.0

Revision date: 20 Aug 2025



| | |
|----------------------------|--|
| Purification: | Purified through a protein A column, followed by peptide affinity purification. |
| Storage: | Aliquot and store at -20°C. Avoid repeated freeze/thaw cycles. |
| UniProt Primary AC: | O75496 (UniProt , ExPASy) |
| Gene Symbol: | GMNN |
| KEGG: | hsa:51053 |
| String: | 9606.ENSP00000230056 |
| Molecular Weight: | Calculated MW: 23.6 kDa |
| Buffer: | PBS containing 0.09% sodium azide. |
| Specificity: | Predicted to react with Mouse GMNN. |
| Note: | THIS PRODUCT IS FOR RESEARCH USE ONLY. NOT FOR USE IN DIAGNOSTIC, THERAPEUTIC OR COSMETIC PROCEDURES. NOT FOR HUMAN OR ANIMAL CONSUMPTION. |

For Reference Only