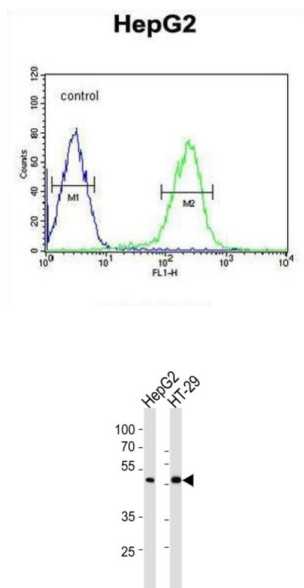


Mothers Against Decapentaplegic Homolog 6 (SMAD6) Antibody

Catalogue No.: abx032486



SMAD6 belongs to the SMAD family of proteins, which are related to *Drosophila* 'mothers against decapentaplegic' (Mad) and *C. elegans* Sma. SMAD proteins are signal transducers and transcriptional modulators that mediate multiple signaling pathways. This protein functions in the negative regulation of BMP and TGF-beta/activin-signalling.

Target: Mothers Against Decapentaplegic Homolog 6 (SMAD6)

Clonality: Polyclonal

Reactivity: Human

Tested Applications: ELISA, WB

Host: Rabbit

Recommended dilutions: WB: 1/500. Optimal dilutions/concentrations should be determined by the end user.

Conjugation: Unconjugated

Immunogen: KLH-conjugated synthetic peptide between 358-386 amino acids from the Central region of human SMAD6.

Isotype: IgG

Form: Liquid

Datasheet

Version: 3.0.0
Revision date: 09 May 2025



Purification:	Purified through a protein A column, followed by peptide affinity purification.
Storage:	Aliquot and store at -20°C. Avoid repeated freeze/thaw cycles.
UniProt Primary AC:	O43541 (UniProt , ExPASy)
Gene Symbol:	SMAD6
NCBI Accession:	NP_001136333.1, NP_005576.3
KEGG:	hsa:4091
String:	9606.ENSP00000288840
Molecular Weight:	Calculated MW: 53.5 kDa
Buffer:	PBS containing 0.09% sodium azide.
Specificity:	Predicted to react with Mouse SMAD6.
Note:	THIS PRODUCT IS FOR RESEARCH USE ONLY. NOT FOR USE IN DIAGNOSTIC, THERAPEUTIC OR COSMETIC PROCEDURES. NOT FOR HUMAN OR ANIMAL CONSUMPTION.

For Reference Only