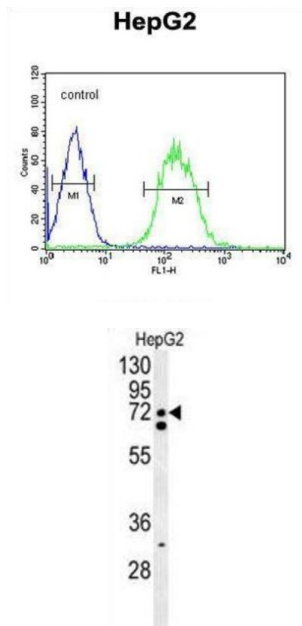


Splicing Factor, Arginine/serine-Rich 16 (SFRS16) Antibody

Catalogue No.: abx032490



SFRS16 is probably functions as an alternative splicing regulator. SFRS16 may regulate the mRNA splicing of genes such as CLK1. This may act by regulating members of the CLK kinase family.

Target:	Splicing Factor, Arginine/serine-Rich 16 (SFRS16)
Clonality:	Polyclonal
Reactivity:	Human
Tested Applications:	ELISA, WB, FCM
Host:	Rabbit
Recommended dilutions:	WB: 1/1000, FCM: 1/10 - 1/50. Optimal dilutions/concentrations should be determined by the end user.
Conjugation:	Unconjugated
Immunogen:	KLH-conjugated synthetic peptide between 254-283 amino acids from the Central region of human SFRS16.
Isotype:	IgG
Form:	Liquid

Datasheet

Version: 5.0.0
Revision date: 06 Mar 2025



Purification:	Purified through a protein A column, followed by peptide affinity purification.
Storage:	Aliquot and store at -20°C. Avoid repeated freeze/thaw cycles.
UniProt Primary AC:	Q8N2M8 (UniProt , ExPASy)
Gene Symbol:	CLASRP
KEGG:	hsa:11129
String:	9606.ENSP00000221455
Molecular Weight:	Calculated MW: 77.2 kDa
Buffer:	PBS containing 0.09% sodium azide.
Specificity:	Predicted to react with Mouse, Rat and Cow CLASRP.
Note:	THIS PRODUCT IS FOR RESEARCH USE ONLY. NOT FOR USE IN DIAGNOSTIC, THERAPEUTIC OR COSMETIC PROCEDURES. NOT FOR HUMAN OR ANIMAL CONSUMPTION.

For Reference Only