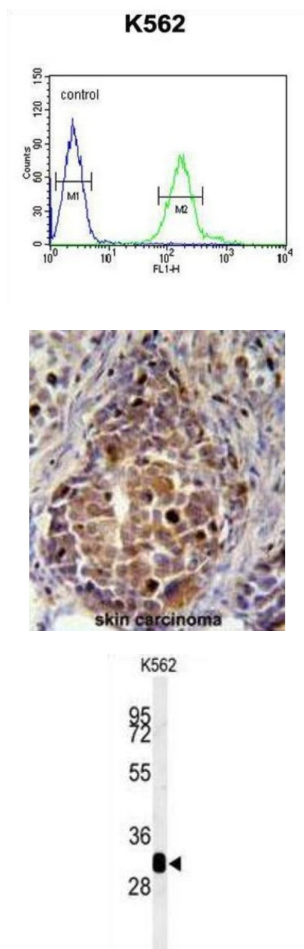


## Retinol Dehydrogenase 16 (RDH16) Antibody

Catalogue No.: abx032526



Retinol Dehydrogenase 16 (RDH16) Antibody is a Rabbit Polyclonal Antibody against Retinol Dehydrogenase 16 (RDH16). Retinol Dehydrogenase 16 (RDH16) is an oxidoreductase with a preference for NAD. It oxidizes all-trans-retinol and 13-cis-retinol to the corresponding aldehydes. RDH16 has higher activity towards CRBP-bound retinol than with free retinol. It oxidizes 3-alpha-hydroxysteroids and also oxidizes androstenediol and androsterone to dihydrotestosterone and androstenedione. RDH16 can also catalyze the reverse reaction.

**Target:** Retinol Dehydrogenase 16 (RDH16)

**Clonality:** Polyclonal

**Reactivity:** Human

**Tested Applications:** ELISA, WB, IHC, FCM

**Host:** Rabbit

# Datasheet

Version: 3.0.0  
Revision date: 18 Mar 2025



**Recommended dilutions:** WB: 1/1000, IHC-P: 1/50 - 1/100, FCM: 1/10 - 1/50. Not tested in IHC-F. Optimal dilutions/concentrations should be determined by the end user.

**Conjugation:** Unconjugated

**Immunogen:** KLH-conjugated synthetic peptide between 3-31 amino acids from the N-terminal region of human RDH16.

**Isotype:** IgG

**Form:** Liquid

**Purification:** Purified through a protein A column, followed by peptide affinity purification.

**Storage:** Aliquot and store at -20°C. Avoid repeated freeze/thaw cycles.

**UniProt Primary AC:** O75452 ([UniProt](#), [ExPASy](#))

**Gene Symbol:** RDH16

**KEGG:** hsa:8608

**String:** [9606.ENSP00000381206](#)

**Molecular Weight:** Calculated MW: 35.7 kDa

**Buffer:** PBS containing 0.09% sodium azide.

**Note:** THIS PRODUCT IS FOR RESEARCH USE ONLY. NOT FOR USE IN DIAGNOSTIC, THERAPEUTIC OR COSMETIC PROCEDURES. NOT FOR HUMAN OR ANIMAL CONSUMPTION.