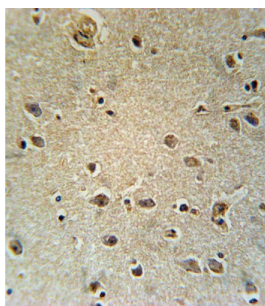
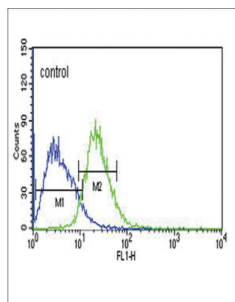


TXTP Antibody

Catalogue No.: abx032539



Citrate transport protein (CTP) is involved in citrate-H (+) /malate exchange and is important for the bioenergetics of hepatic cells as it provides a carbon source for fatty acid and sterol biosyntheses, and NAD⁺ for the glycolytic pathway.

Target: TXTP

Clonality: Polyclonal

Reactivity: Human

Tested Applications: ELISA, WB, IHC, FCM

Host: Rabbit

Recommended dilutions: WB: 1/1000, IHC-P: 1/10 - 1/50, FCM: 1/10 - 1/50. Not tested in IHC-F. Optimal dilutions/concentrations should be determined by the end user.

Datasheet

Version: 2.0.0
Revision date: 02 May 2025



Conjugation:	Unconjugated
Immunogen:	KLH-conjugated synthetic peptide between 142-170 amino acids from the Central region of human TXTP.
Isotype:	IgG
Form:	Liquid
Purification:	Purified through a protein A column, followed by peptide affinity purification.
Storage:	Aliquot and store at -20°C. Avoid repeated freeze/thaw cycles.
UniProt Primary AC:	P53007 (UniProt , ExPASy)
KEGG:	hsa:6576
String:	9606.ENSP00000215882
Molecular Weight:	Calculated MW: 34 kDa
Buffer:	PBS containing 0.09% sodium azide.
Note:	THIS PRODUCT IS FOR RESEARCH USE ONLY. NOT FOR USE IN DIAGNOSTIC, THERAPEUTIC OR COSMETIC PROCEDURES. NOT FOR HUMAN OR ANIMAL CONSUMPTION.