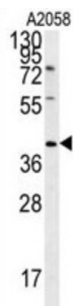
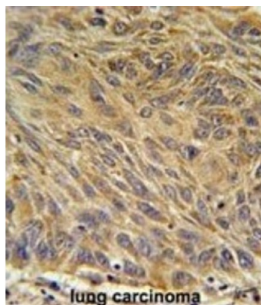


## CD99 Molecule Like 2 (CD99L2) Antibody

Catalogue No.: abx032543



CD99L2 may function as a homophilic adhesion molecule. It functions in leukocyte-endothelial cell interactions during leukocyte extravasation, and in particular, at the diapedesis step. Does not seem to be involved in docking of leukocytes to the vessel wall or in lymphocyte diapedesis (By similarity).

**Target:** CD99 Molecule Like 2 (CD99L2)

**Clonality:** Polyclonal

**Reactivity:** Human

**Tested Applications:** ELISA, WB, IHC

**Host:** Rabbit

**Recommended dilutions:** WB: 1/1000, IHC-P: 1/50 - 1/100. Not tested in IHC-F. Optimal dilutions/concentrations should be determined by the end user.

**Conjugation:** Unconjugated

**Immunogen:** KLH-conjugated synthetic peptide between 39-66 amino acids from the Central region of human CD99L2.

**Isotype:** IgG

**Form:** Liquid

# Datasheet

Version: 2.0.0  
Revision date: 04 Oct 2025



<b>Purification:</b>	Purified through a protein A column, followed by peptide affinity purification.
<b>Storage:</b>	Aliquot and store at -20°C. Avoid repeated freeze/thaw cycles.
<b>UniProt Primary AC:</b>	Q8TCZ2 ( <a href="#">UniProt</a> , <a href="#">ExPASy</a> )
<b>Gene Symbol:</b>	CD99L2
<b>KEGG:</b>	hsa:83692
<b>String:</b>	<a href="#">9606.ENSP00000480322</a>
<b>Molecular Weight:</b>	Calculated MW: 28 kDa
<b>Buffer:</b>	PBS containing 0.09% sodium azide.
<b>Note:</b>	THIS PRODUCT IS FOR RESEARCH USE ONLY. NOT FOR USE IN DIAGNOSTIC, THERAPEUTIC OR COSMETIC PROCEDURES. NOT FOR HUMAN OR ANIMAL CONSUMPTION.

For Reference Only